


ENGINEERING CALCULATIONS AND ANALYSIS


Title: Baseline Characterization Database Verification Report – PCEA Billet 02S8-7
ECAR No.: 3725 Rev. No.: 0 Project No.: 32138 Date: 07/18/2017


Performer: David Rohrbaugh D520  7/10/2017
(Signature) (Date)

Checker¹: W. David Swank B120  7/10/17
(Signature) (Date)

Independent Peer Reviewer²: N/A


CUI Reviewer: N/A
Yes or No⁵

Manager³: Scott McBride D520  7.10.17
(Signature) (Date)

Owner⁴: William Windes B120  7-11-17
(Signature) (Date)

Nuclear Safety⁴: N/A

Cognizant Engineer⁴: N/A

Quality Assurance: Michelle Sharp H330  7/18/17
(Signature) (Date)

1. Confirmation of completeness, mathematical accuracy, and correctness of data and appropriateness of assumptions.
2. Concurrence of method or approach. See definition in LWP-10106.
3. Concurrence of procedure compliance. Concurrence with method/approach and conclusion.
4. Concurrence with the document's assumptions and input information. See definition of acceptance in LWP-10200.
5. Does the document contain CUI material? Please check either yes or no.

Title: Baseline Characterization Database Verification Report – PCEA Billet 02S8-7

ECAR No.: 3725 Rev. No.: 0 Project No.: 32138 Date: 07/18/2017

1. Quality Level (QL) No.	NA	Professional Engineer's Stamp NA See LWP-10010 for requirements
2. QL Determination No.	NA	
3. Engineering Job (EJ) No.	NA	
4. SSC ID	NA	
5. Building	IRC	
6. Site Area	REC	
7. Objective/Purpose: The purpose of this Engineering Calculations and Analysis Report is to present the data being collected in the Baseline Graphite Characterization program, which is directly tasked with supporting the Idaho National Laboratory's (INL's) research and development efforts on the Advanced Reactor Technologies (ART) Program. This program is populating a comprehensive database that will reflect the baseline properties of nuclear-grade graphite with regard to individual grade, billet, and position within individual billets. The physical and mechanical property information being collected will be transferred to the Nuclear Data Management and Analysis System (NDMAS), and that database will help populate the handbook of property data available to member nations of the Generation IV International Forum. Transfer of these data from the applicable technical lead to the dissemination databases available to other end users requires a full review of the test procedures and data collection efforts through an analysis of the multiple summary spreadsheets and values being collected. This report represents the analysis for PCEA billet 02S8-7 and facilitates release of associated data to the NDMAS custodians.		
8. If revision, please state the reason and list sections and/or pages being affected: NA		
9. Conclusions/Recommendations: Based on a review of the data spreadsheets compiled from physical and mechanical property measurements on nuclear-grade graphite billet PCEA 02S8-7, only one data point was found that is not representative of the measured property (modulus by fundamental frequency). All other data were found to have no notable errors or omissions that will preclude the transfer of these data to the NDMAS site for storage. In addition to a full visual review of the data files to determine whether or not obvious errors were made with the data collected, graphical representations were made of individual evaluations in order to provide a means to spot anomalies. The techniques employed are adequate to ensure the comprehensive amount of data collected reflect the intended values of interest. A review of the data indicates that the files, as submitted, are fully representative of the measured properties of the graphite billets being tested, as outlined in the applicable test procedures and program plans.		

Title: Baseline Characterization Database Verification Report – PCEA Billet 02S8-7

ECAR No.: 3725 Rev. No.: 0 Project No.: 32138 Date: 07/18/2017

CONTENTS

PROJECT ROLES AND RESPONSIBILITIES7

SCOPE AND BRIEF DESCRIPTION8

DESIGN OR TECHNICAL PARAMETER INPUT AND SOURCES8

ASSUMPTIONS8

COMPUTER CODE VALIDATION8

DISCUSSION/ANALYSIS9

 Introduction9

 Database Analysis9

 Compression Specimen Database (PCEA 02S8-7C)11

 Electrical Resistivity, Modulus, Coefficient of Thermal Expansion15

 Density Values18

 Flexural Specimen Database (PCEA 02S8-7F)19

 Density Values23

 Tensile Specimen Database (PCEA 02S8-7T)26

RE-MACHINED SPECIMEN PROPERTIES29

RE-MACHINED SPLIT DISC TESTING30

RE-MACHINED SPECIMEN DIFFUSIVITY32

SUMMARY32

REFERENCES33

 Appendix A Additional Compression Specimen Database Plots (PCEA 02S8-7C) A1

 Appendix B Additional Flexural Specimen Database Plots (PCEA 02S8-7F) B1

 Appendix C Additional Tensile Specimen Database Plots (PCEA 02S8-7T) C1

Title: Baseline Characterization Database Verification Report – PCEA Billet 02S8-7

ECAR No.: 3725 Rev. No.: 0 Project No.: 32138 Date: 07/18/2017

FIGURES

Figure 1. The three types of mechanical test specimens that will be machined from stock graphite and provide the basis for material property evaluations. 10

Figure 2. Individual specimen extraction and tracking identification from PCEA 02S8-7..... 10

Figure 3. Average length (mm), mean = 25.4007, standard deviation = 0.0304..... 12

Figure 4. Average diameter (mm), mean = 12.7010, standard deviation = 0.0075..... 12

Figure 5. Compressive load at maximum load (N), mean = 7911, standard deviation = 1294.. 13

Figure 6. Compressive stress at maximum load (MPa), mean = 62, standard deviation = 10.. 13

Figure 7. Displacement at maximum load (mm), mean = -0.7055, standard deviation = 0.1712..... 14

Figure 8. Compressive strain (mm/mm), mean = 0.0278, standard deviation = 0.0067. 14

Figure 9. Fracture categorization results and description. 15

Figure 10. Resistivity ($\mu\Omega\text{-m}$), mean = 8.0, standard deviation = 0.5. 16

Figure 11. Elastic modulus by sonic velocity method (GPa), mean = 12.6, standard deviation = 0.7..... 16

Figure 12. Shear modulus by sonic velocity method (GPa), mean = 4.7, standard deviation = 0.2..... 17

Figure 13. Elastic modulus by sonic resonance method (GPa), mean = 10.4, standard deviation = 0.7..... 17

Figure 14. Mean coefficient of thermal expansion (1/K)..... 18

Figure 15. Density (g/cm^3), mean = 1.8047, standard deviation = 0.0211..... 19

Figure 16. Average thickness (mm), mean = 8.0281, standard deviation = 0.0453..... 20

Figure 17. Average width (mm), mean = 15.8883, standard deviation = 0.0085. 20

Figure 18. Average length (mm), mean = 79.4117, standard deviation = 0.0312..... 21

Figure 19. Maximum load (N), mean = -468.1, standard deviation = 83.6..... 22

Figure 20. Maximum flexure stress (MPa), mean = 27.3, standard deviation = 5.2..... 22

Figure 21. Mid-span deflection at maximum load (μm), mean = -0.3774, standard deviation = 0.0817..... 23

Figure 22. Density (g/cm^3), mean = 1.8136, standard deviation = 0.0194..... 24

Figure 23. Flexural vibration mode modulus (GPa), mean = 10.6, standard deviation = 2.5. The highlighted point outside of the three standard deviation limit is excluded from the data set..... 25

Figure 24. Torsional vibration mode modulus (GPa), mean = 4.4, standard deviation = 0.3.... 25

Title: Baseline Characterization Database Verification Report – PCEA Billet 02S8-7

ECAR No.: 3725 Rev. No.: 0 Project No.: 32138 Date: 07/18/2017

Figure 25. Minimum gauge diameter (mm), mean = 9.5222, standard deviation = 0.0117.....27

Figure 26. Maximum load (N), mean = 1172.9, standard deviation = 338.8.....27

Figure 27. Stress at break (MPa), mean = 16.4, standard deviation = 4.7.28

Figure 28. Average strain at break (%), mean = 0.26, standard deviation = 0.08.....28

Figure 29. Ultimate tensile strength (MPa), mean = 16.4, standard deviation = 4.7.29

Figure 30. Unstressed specimen remnants from tensile specimens are re-machined into AGC-sized piggyback specimens.....30

Figure 31. Split disc test tensile strength (MPa), mean = 17.83, standard deviation = 2.59.31

Figure 32. Split disc test compressive load at maximum load (N), mean = 2355.8, standard deviation = 159.9.....31

Figure 33. Re-machined specimen diffusivity (mm²/sec).....32

Figure A-1. Mass (mg), mean = 5807.9, standard deviation = 70.4.....1

Figure A-2. Volume (mm³), mean = 3218, standard deviation = 5.4.....1

Figure B-1. Elapsed time at maximum load (sec), mean = 37.0, standard deviation = 5.7.1

Figure B-2. Volume (mm³), mean = 10130.1, standard deviation = 57.1.....1

Figure C-1. Modulus (automatic Young's) (GPa), mean = 9.0, standard deviation = 0.5.....1

Figure C-2. Load at break (N), mean = 1171.9, standard deviation = 338.7.....1

Figure C-3. Strain 1 at break (mm/mm), mean = 0.0026, standard deviation = 0.0007.2

Figure C-4. Strain 2 at break (mm/mm), mean = 0.0027, standard deviation = 0.0008.2

Figure C-5. Re-machined length (mm), mean = 6.3610, standard deviation = 0.0150.3

Figure C-6. Re-machined diameter (mm), mean = 12.7173, standard deviation = 0.0096.3

Figure C-7. Re-machined density (g/cm³), mean = 1.8167, standard deviation = 0.0207.....4

Figure C-8. Split disc test extension (mm), mean = 0.6749, standard deviation = 0.0479.....4

Figure C-9. Split disc test deflection (mm), mean = -0.5765, standard deviation = 0.0422.....5

Title: Baseline Characterization Database Verification Report – PCEA Billet 02S8-7

ECAR No.: 3725 Rev. No.: 0 Project No.: 32138 Date: 07/18/2017

PROJECT ROLES AND RESPONSIBILITIES

Project Role	Name (Typed)	Organization	Pages covered (if applicable)
Performer	David Rohrbaugh	D520	All
Checker ^a	W. David Swank	B120	All
Independent Reviewer ^b	NA		
CUI Reviewer ^c	NA		All
Manager ^d	Scott McBride	D520	
Requestor ^e	William Windes	B120	
Nuclear Safety ^e	NA		
Document Owner ^e	William Windes	B120	
Quality Assurance	Michelle Sharp	H330	

Responsibilities:

- a. Confirmation of completeness, mathematical accuracy, and correctness of data and appropriateness of assumptions.
- b. Concurrence of method or approach. See definition in LWP-10106.
- c. Concurrence with the document's markings in accordance with LWP-11202.
- d. Concurrence of procedure compliance. Concurrence with method/approach and conclusion.
- e. Concurrence with the document's assumptions and input information. See definition of acceptance in LWP-10200.

NOTE: *Delete or mark "NA" for project roles not engaged. Include ALL personnel and their roles listed above in the eCR system. The list of the roles above is not all inclusive. If needed, the list can be extended or reduced.*

Title: Baseline Characterization Database Verification Report – PCEA Billet 02S8-7

ECAR No.: 3725

Rev. No.: 0

Project No.: 32138

Date: 07/18/2017

SCOPE AND BRIEF DESCRIPTION

This engineering calculations and analysis report is a validity evaluation of the physical and mechanical property databases collected on a billet of nuclear-grade graphite (i.e., PCEA Billet 02S8-7) in support of the ART Baseline Graphite Characterization Program.^{1,2} Millions of raw data points have been collected during testing and quantification analyses for these billets. The summary scalar property values and supplementary traceability data are collected into comprehensive spreadsheets. Data sets are comprised of single billets of graphite for any given grade, organized by mechanical test specimen type and further subdivided into individual spreadsheet tabs according to the specific test or evaluation being performed.

This report is not a direct analysis of properties and will not provide information on the validity or performance characteristics of the graphite itself. Rather, it is intended as a verification of the completeness of actual data collected in accordance with PLN-3467, "Baseline Graphite Characterization Plan: Electromechanical Testing,"³ and its representation of the measurement and test results with sole regard to the graphite billets under evaluation.

DESIGN OR TECHNICAL PARAMETER INPUT AND SOURCES

Mechanical and physical property testing is carried out in accordance with PLN-3348, "Graphite Mechanical Testing"²; PLN-3467, "Baseline Graphite Characterization Plan: Electromechanical Testing"³; and PLN-3267, "AGC-2 Characterization Plan."⁴

ASSUMPTIONS

None.

COMPUTER CODE VALIDATION

Data collection and storage is organized as reported in PLN-3467 and INL/EXT-10-19910, *Baseline Graphite Characterization: First Billet*.⁵ Individual computers run Windows XP operating systems and store data on Microsoft Office Excel 2007 spreadsheets.

Control of individual test equipment is carried out by proprietary Netzsch software (IRC C-20) or Instron's Bluehill (Version 2) software (load frames in IRC B-11). Both software suites are commercially-available packages. Updates and data transfers/integration are handled outside of INL's network system on a dedicated local area network.

The comprehensive interface between data collection, evaluation, and storage computers is handled through the customized LabVIEW-based Graphite Mechanical Properties Data Acquisition Software (Version 4.0). The ART Baseline Graphite Characterization Program's version control and operability checks are documented and validated in a registered laboratory notebook, LAB-2143, "Baseline Graphite Characterization." All pertinent lifecycle documentation is recorded in accordance with LWP-20000-01, "Conduct of Research Plan."⁶ Validation of commercial packages is handled via integrated system checks specific to each new element or upgrade as appropriate.

Title: Baseline Characterization Database Verification Report – PCEA Billet 02S8-7

ECAR No.: 3725

Rev. No.: 0

Project No.: 32138

Date: 07/18/2017

DISCUSSION/ANALYSIS

Introduction

The ART Project Graphite Research and Development Program is generating the extensive amount of quantitative data necessary for predicting the behavior and operating performance of the available nuclear graphite grades. To determine in-service behavior of graphite for the latest proposed designs, two main programs are underway. The first, the Advanced Graphite Creep (AGC) Program, provides a set of tests that are designed to evaluate the irradiated properties and behavior of nuclear-grade graphite over a large spectrum of conditions based on the operating environment of the very high-temperature reactor core.¹ A limited amount of data can be generated on irradiated material because of the limited availability of space within the Advanced Test Reactor and the geometric constraints placed on the AGC specimens that will be inserted. To supplement the AGC data set, the ART Baseline Graphite Characterization Program provides additional data that will characterize inherent property variability in nuclear-grade graphite without the testing constraints of the AGC Program.² This variability in properties is a natural artifact of graphite due to the geologic raw materials that are used in its production. This variability is being quantified not only within a single billet of as-produced graphite, but also from billets within a single lot, billets from different lots of the same grade, and across different billets of numerous grades of nuclear graphite that are presently available.

This report covers the release of physical and mechanical property data from a billet of PCEA graphite. The graphite billet, PCEA 02S8-7, is a block of extruded graphite with a large grain structure. The baseline mechanical properties database for this billet, plots of which are included throughout this report, are comprised solely of scalar results from each of the different evaluations (i.e., mechanical testing and physical properties) in summary form, and consists of tabbed spreadsheets being occupied by over 70,000 cells of individual characteristic or property values and associated tagging information.

This report is intended as a validation review of the graphite billet, PCEA 02S8-7. It is not an analysis of property characteristics or trends beyond the evaluation necessary to determine if the collected data are reflective of the properties of this particular graphite billet. It is an acceptance of the test methods used, data calculations and conversions being carried out, and review of values from the standpoint of determining whether or not they reflect anomalous behavior that must be further investigated.

Ultimately, this report provides justification for transfer of this data set into a storage and analysis system that is available for internal and external analysts to utilize in evaluating the relevant characteristics and performance of nuclear-grade graphite.

Database Analysis

The multitude of data sets being generated for the ART Baseline Graphite Characterization Program consist of properties collected on standard American Society of Testing and Materials (ASTM) International-based mechanical test specimens as shown in Figure 1. Details of specimen tracking, traceability, process flow, and the techniques being employed to facilitate those activities are provided in INL/EXT-10-19910.⁵ For ease of reviewing the applicable data in this report, an example of a sectioning diagram for PCEA graphite, along with the applicable specimen identification codes, is provided in Figure 2. This figure is representative of a single sub-wedge of graphite from this billet.

Title: Baseline Characterization Database Verification Report – PCEA Billet 02S8-7

ECAR No.: 3725 Rev. No.: 0 Project No.: 32138 Date: 07/18/2017

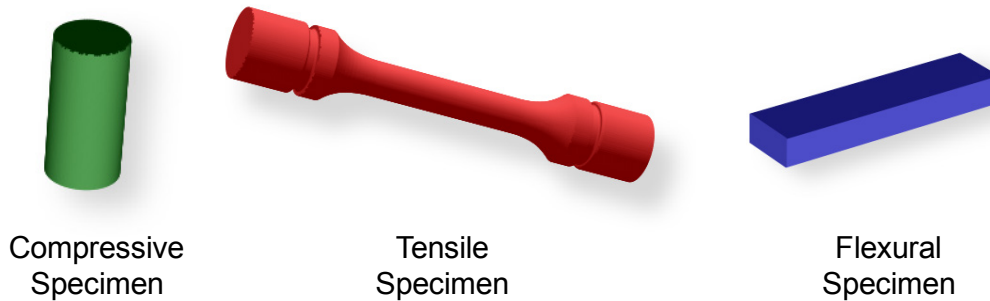


Figure 1. The three types of mechanical test specimens that will be machined from stock graphite and provide the basis for material property evaluations.

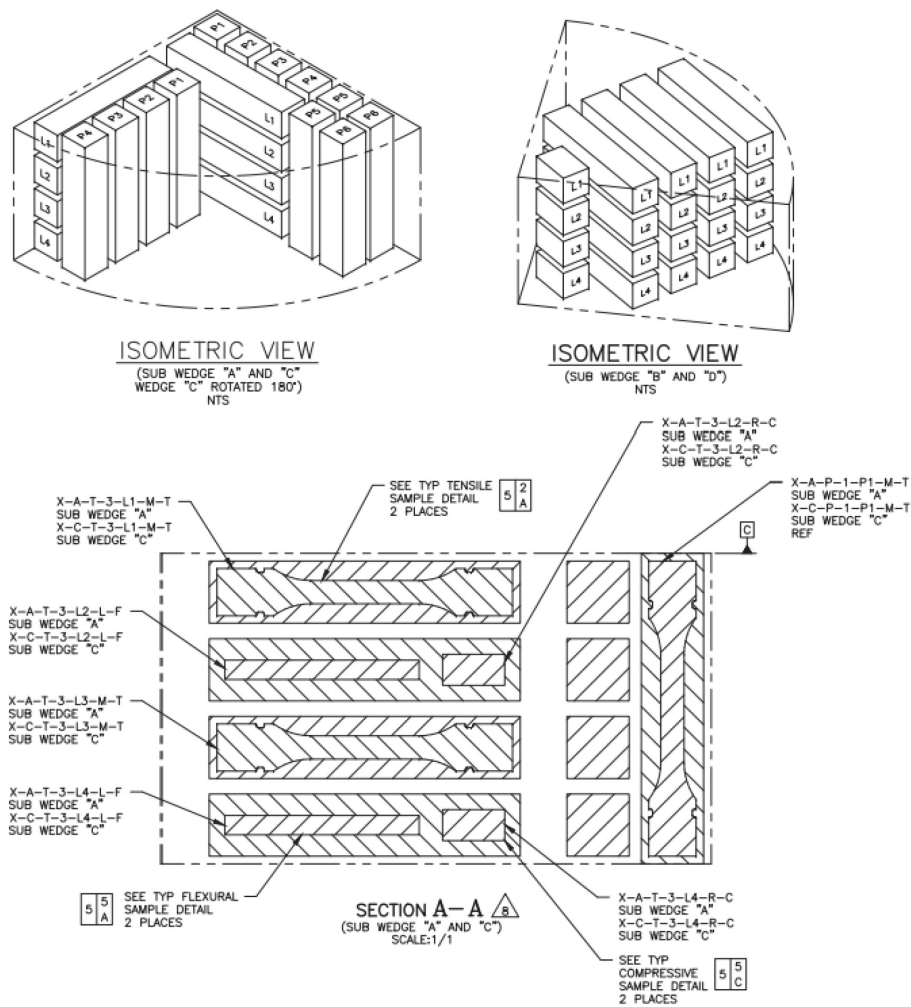


Figure 2. Individual specimen extraction and tracking identification from PCEA 02S8-7.

Title: Baseline Characterization Database Verification Report – PCEA Billet 02S8-7

ECAR No.: 3725 Rev. No.: 0 Project No.: 32138 Date: 07/18/2017

Sections of this report cover each of the individual databases for this billet, are divided by mechanical test specimen type (i.e., compressive, flexural, and tensile), and are organized so they present data in graphical form. The graphic representations are not sorted in any way aside from the actual order in which they were tested, which was randomized for the express purpose of minimizing test anomalies based on actual test timeframes. Some expectation of variation in the property values exists, but individual data points that fall within a reasonable property value range are considered acceptable. Comparisons of extreme values with other associated properties (e.g., a comparison of maximum tensile load values with measured strain to determine whether they are related by the expected elastic modulus) are carried out where applicable. Each of these comparisons and analyses may not be explicitly included in this report, but the process control charts with standard deviation values and/or property trend charts for the various characteristics being measured are included either in the text below or in the three appendices (± 1 , 2, and 3 standard deviations are represented by the yellow, orange, and red dotted lines and the mean is represented by the green line).

A goal of the ART Baseline Graphite Characterization Program is to identify and quantify inter-billet variation. However, the focus of this analysis is to compare values from complete data sets to quickly identify outlying points. One example would be a “zero” value for a specific property—quickly identifiable on a test result trend graph—providing an indication that the specific spreadsheet cell is improperly empty. Another example would be a large disparity between a limited number of points on that same test result trend graph that result from missing values in other cells (i.e., dimensional measurements from which final properties are calculated). This verification will couple those observations with a comprehensive data scan of individual points to determine whether the data set can be considered complete and the scalar summary points provided to the NDMAS are appropriately representative of the billet under evaluation.

Compression Specimen Database (PCEA 02S8-7C)

Compression Testing

Compression testing was performed per ASTM C695-15, “Standard Test Method for Compressive Strength of Carbon and Graphite,”⁷ and PLN-3467. This ASTM standard requires that the height to diameter ratio of each specimen fall between 1.9 and 2.1. Figure 3 and Figure 4 show the measured lengths and diameters of the specimens that were compression tested. Highlighted in each of these graphs are the length and diameter measurements that fell outside three standard deviations above or below the mean. However, these specimens met the height to diameter ratio requirement of the ASTM standard and their compression test results all fell within a reasonable interval. Because of this, the compression data were deemed to be acceptable, and are included in the data set.

Figure 5 shows the maximum applied load for each of the 230 compression specimens from billet 02S8-7. As was mentioned previously, some variation in graphite properties is expected, and this variation is reflected in the difference in test frame loading. The compressive strength values (Figure 6) correlate directly with the recorded load values, confirming the stress calculations were performed correctly. An additional check of critical property values is the measured deflection (Figure 7) of the loading surface, or upper platen, as measured by a calibrated deflectometer. Within geometric variations, the deflection should reflect the calculated compressive strain as shown in Figure 8.

Title: Baseline Characterization Database Verification Report – PCEA Billet 02S8-7

ECAR No.: 3725

Rev. No.: 0

Project No.: 32138

Date: 07/18/2017

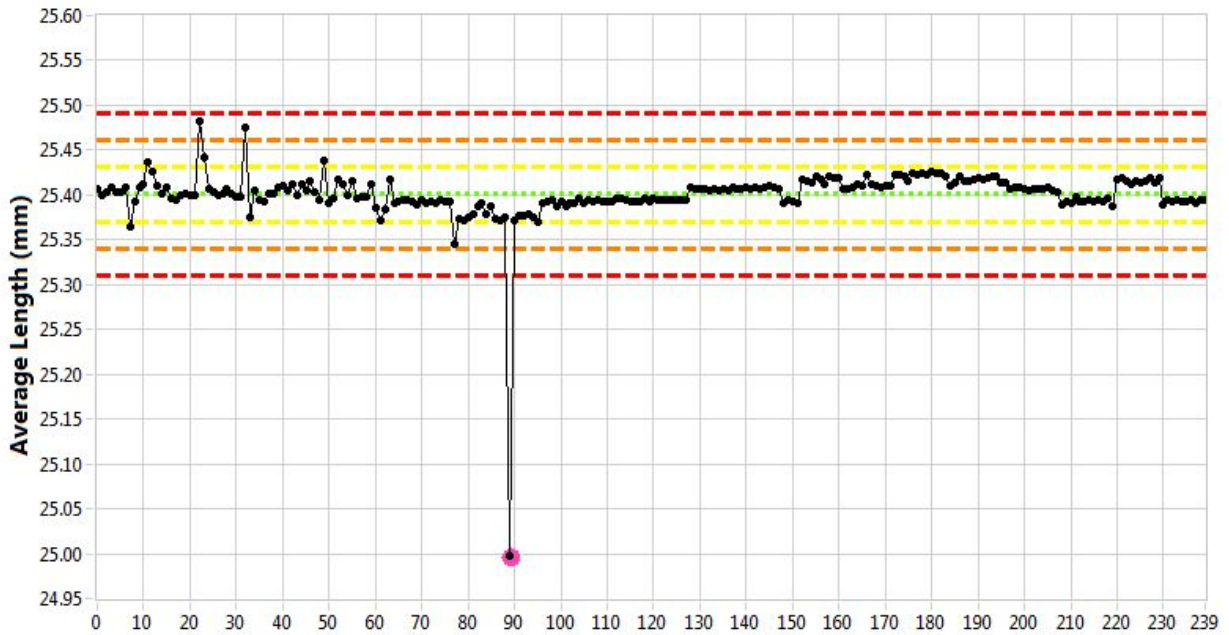


Figure 3. Average length (mm), mean = 25.4007, standard deviation = 0.0304.

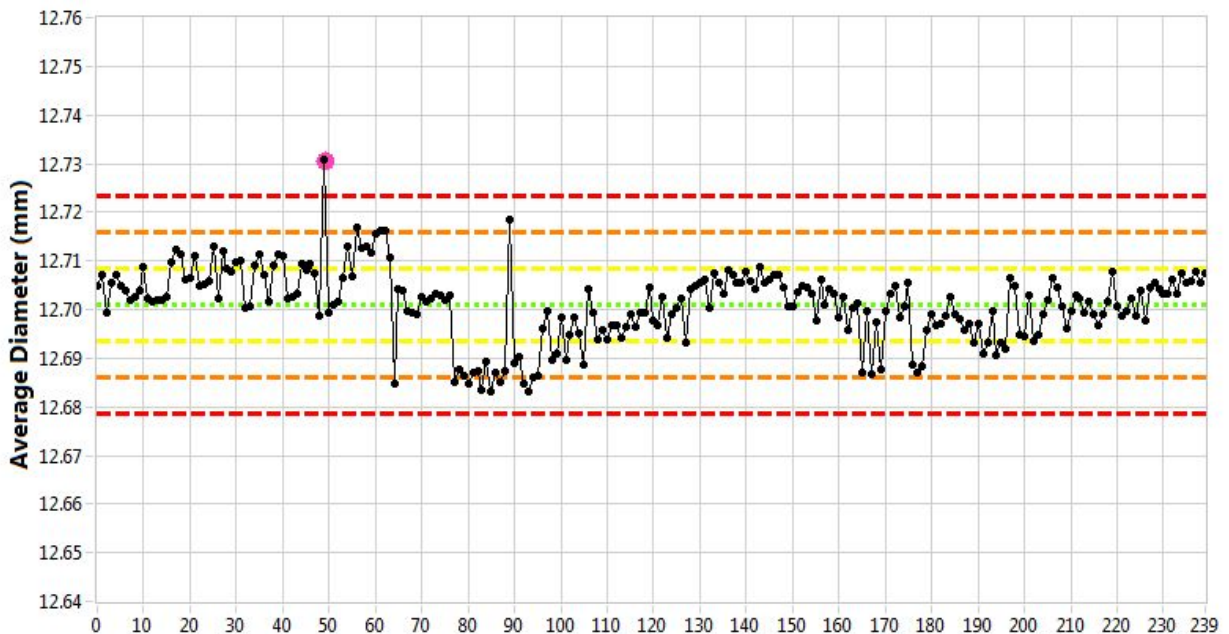


Figure 4. Average diameter (mm), mean = 12.7010, standard deviation = 0.0075.

Title: Baseline Characterization Database Verification Report – PCEA Billet 02S8-7

ECAR No.: 3725

Rev. No.: 0

Project No.: 32138

Date: 07/18/2017

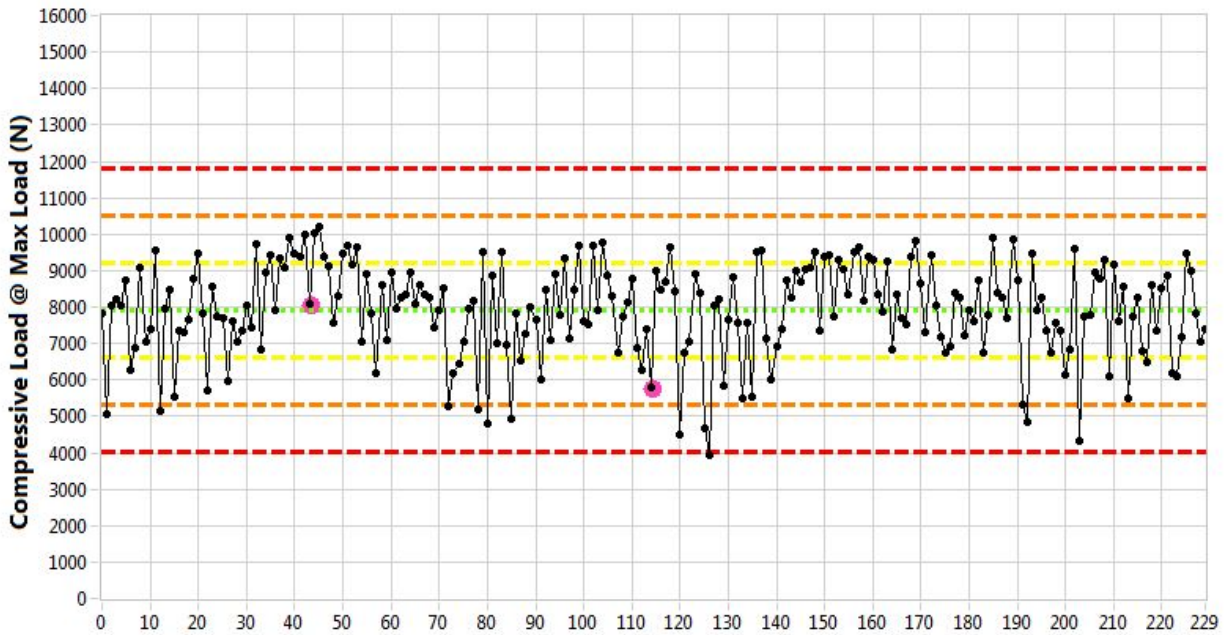


Figure 5. Compressive load at maximum load (N), mean = 7911, standard deviation = 1294.

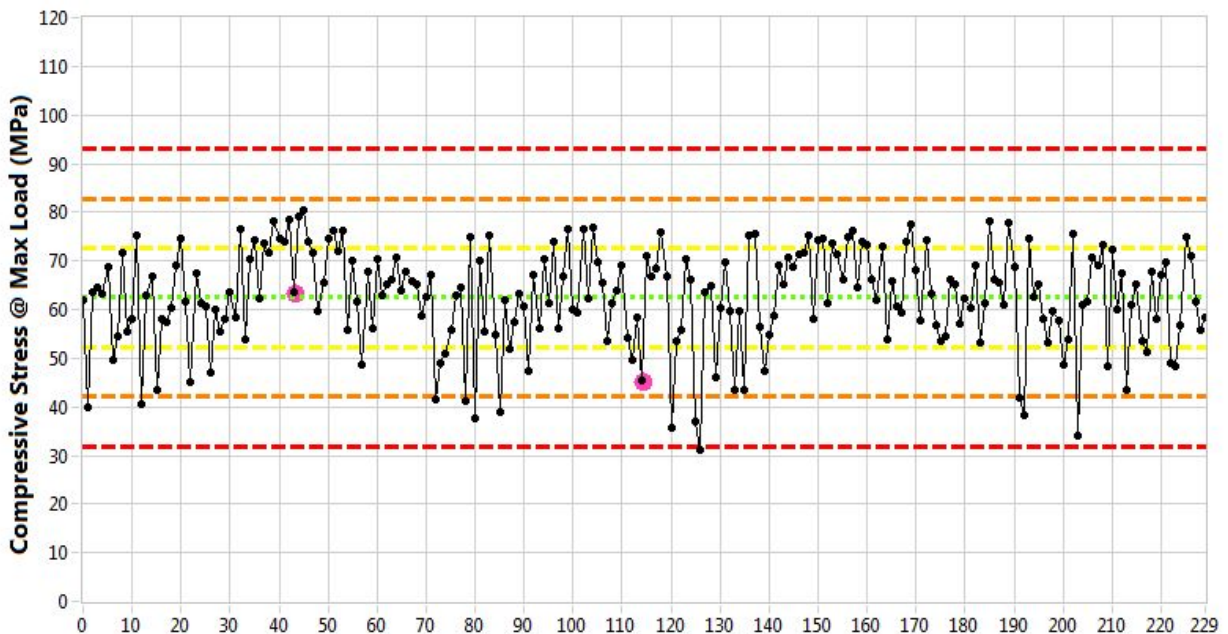


Figure 6. Compressive stress at maximum load (MPa), mean = 62, standard deviation = 10.

Title: Baseline Characterization Database Verification Report – PCEA Billet 02S8-7

ECAR No.: 3725

Rev. No.: 0

Project No.: 32138

Date: 07/18/2017

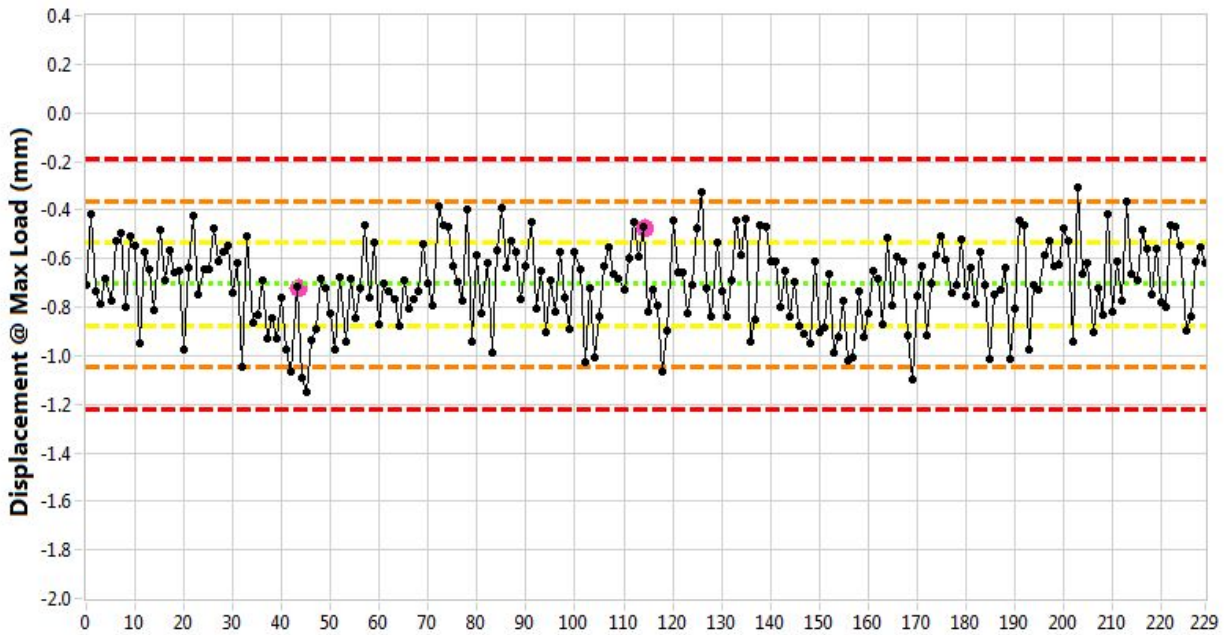


Figure 7. Displacement at maximum load (mm), mean = -0.7055, standard deviation = 0.1712.

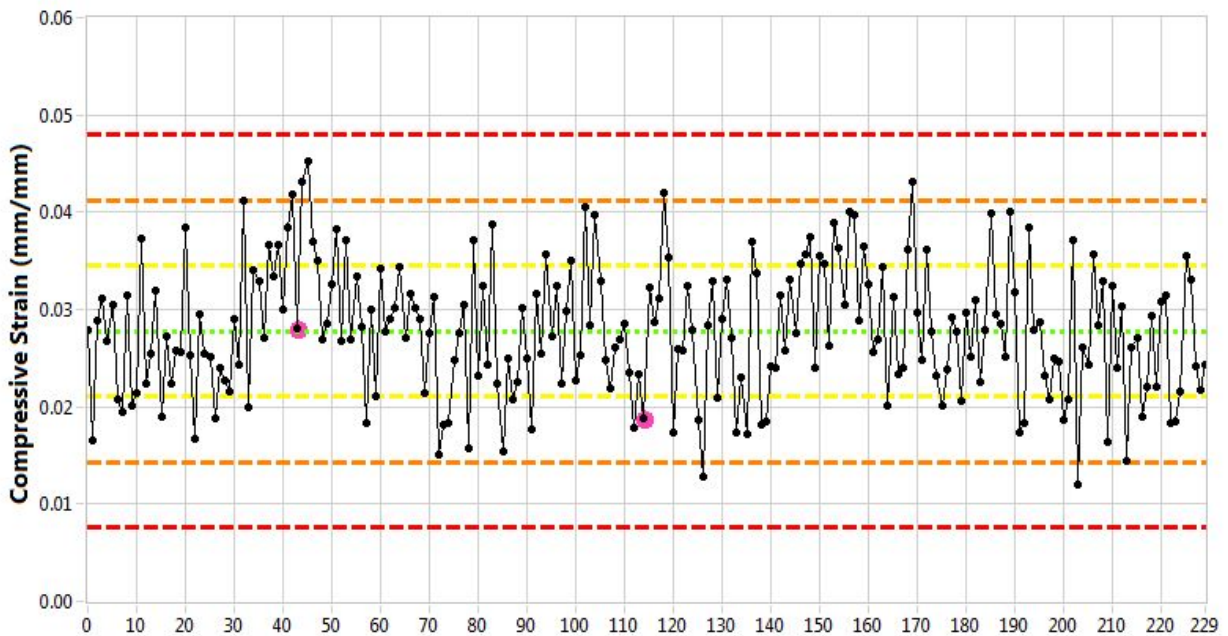


Figure 8. Compressive strain (mm/mm), mean = 0.0278, standard deviation = 0.0067.

Title: Baseline Characterization Database Verification Report – PCEA Billet 02S8-7

ECAR No.: 3725

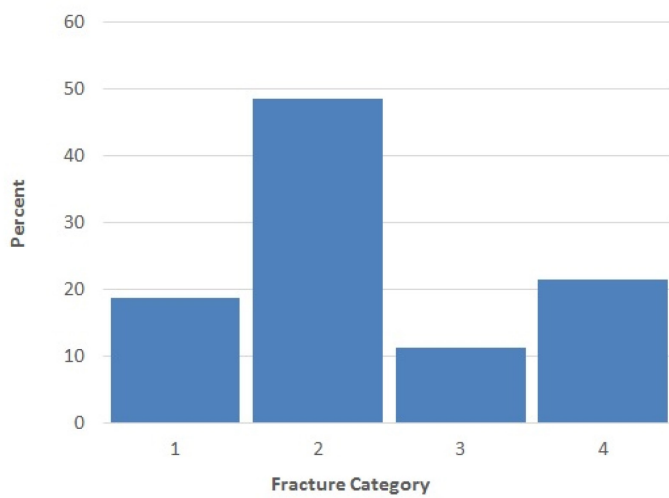
Rev. No.: 0

Project No.: 32138

Date: 07/18/2017

Fracture Surface Categorization

The fracture surfaces from compressive specimens offer an additional opportunity to collect scalar data that can be sorted with respect to graphite type and position. To allow for consistency in what is essentially a qualitative attribute, a description of each of the fracture types is provided to the user of the Graphite Mechanical Properties Data Acquisition Software. A screen shot of this categorization, along with distribution of recorded fracture categories for each of the 230 compressive specimens from PCEA 02S8-7 (with no anomalous values indicative of an unallowable characterization), is provided in Figure 9.



Fracture Category Descriptions

Category 1
Fracture initiates at the surface of the long axis from tensile forces as the outer fibers are strained, resulting in the loss of a wedge-shaped component from the specimen side. Ends often remain intact, and specimen may or may not be completely severed.

Category 2
Shear fracture with the major failure surface lying 55°-65° from the specimen ends. Fractures that fit this description but do not lie between 55° and 65° should be listed under Category 4 with the failure angle estimated to the nearest 5°.

Category 3
Fracture surface has a large portion lying parallel to the applied force (long axis direction). It will also regularly contain a shear fracture component, but the cleavage surface contains at least 50% of the overall specimen height.

Category 4
Any fracture condition not described by the other categories (i.e. specimen brittle fracture that leaves few major portions that can be classified) or a shear fracture that does not lie between 55° and 65°. Fractures in this category must be described in the Comments section.

Figure 9. Fracture categorization results and description.

Electrical Resistivity, Modulus, Coefficient of Thermal Expansion

Electrical resistivity, Young's modulus and shear modulus by sonic velocity, Young's modulus by sonic resonance, and coefficient of thermal expansion tests were performed on a subset of the compression specimens before they were broken. These tests were carried out via the appropriate ASTM standards.^{8,9,10,11,12} Charts of those data are shown in Figure 10 through Figure 14.

Title: Baseline Characterization Database Verification Report – PCEA Billet 02S8-7

ECAR No.: 3725

Rev. No.: 0

Project No.: 32138

Date: 07/18/2017

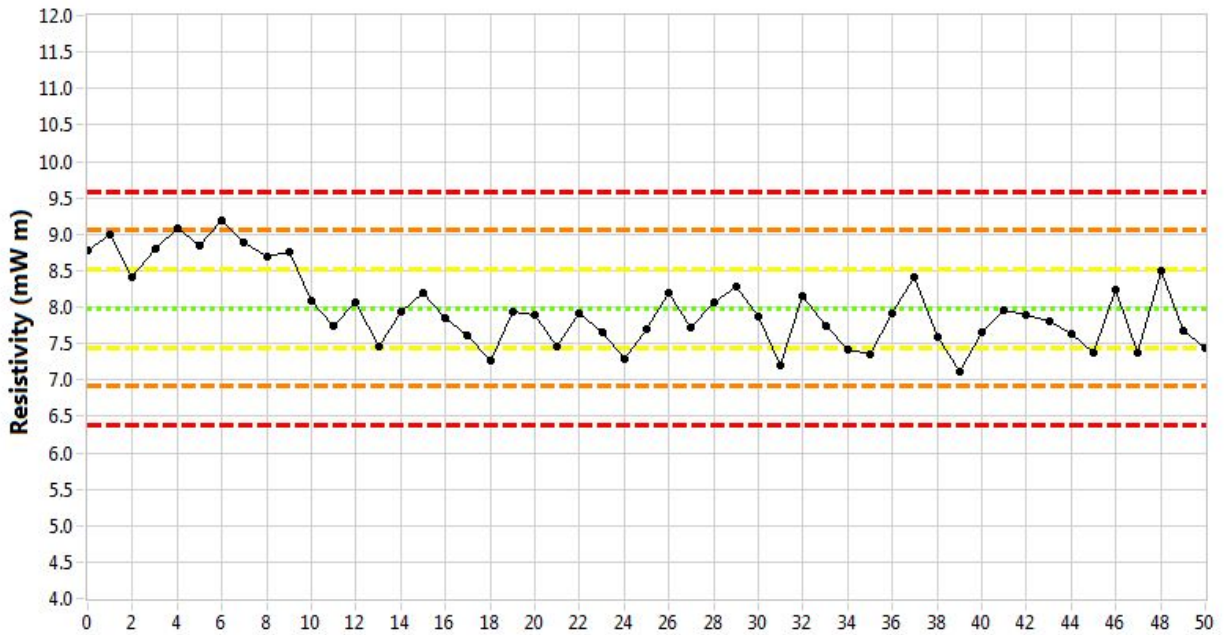


Figure 10. Resistivity ($\mu\Omega\text{-m}$), mean = 8.0, standard deviation = 0.5.

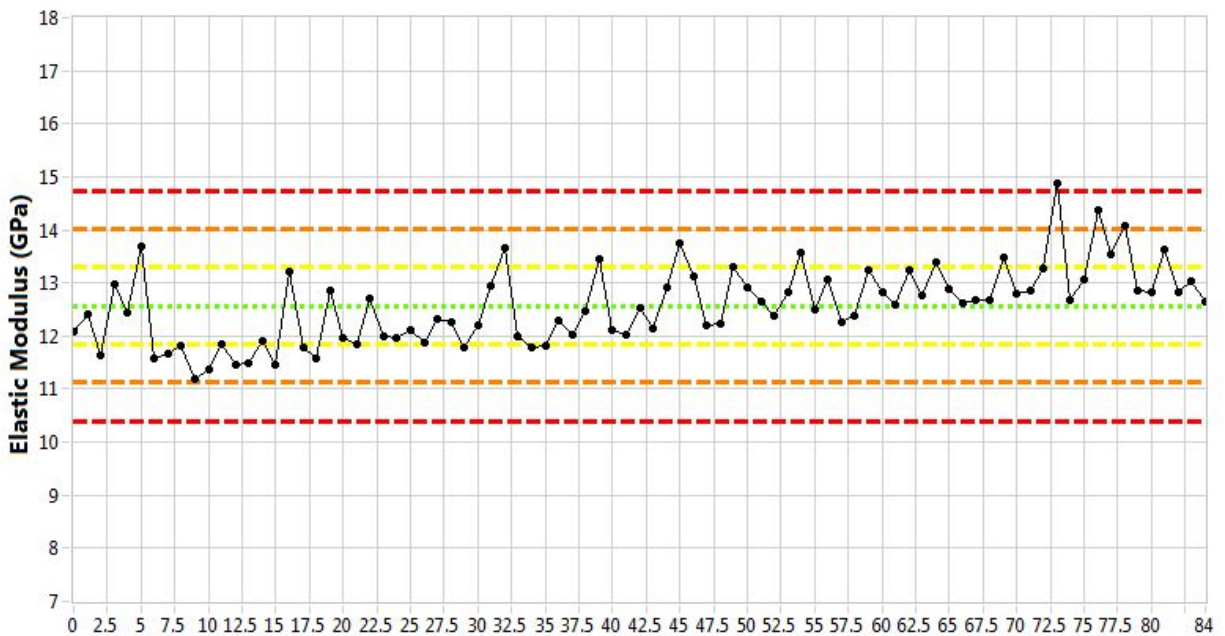


Figure 11. Elastic modulus by sonic velocity method (GPa), mean = 12.6, standard deviation = 0.7.

Title: Baseline Characterization Database Verification Report – PCEA Billet 02S8-7

ECAR No.: 3725

Rev. No.: 0

Project No.: 32138

Date: 07/18/2017

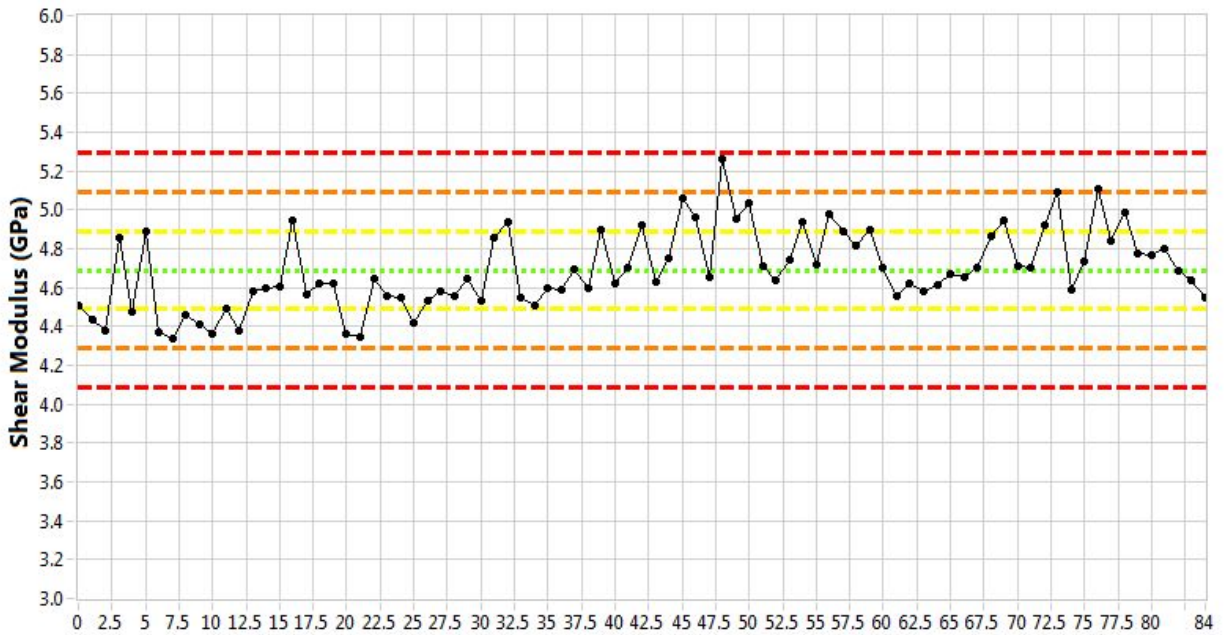


Figure 12. Shear modulus by sonic velocity method (GPa), mean = 4.7, standard deviation = 0.2.

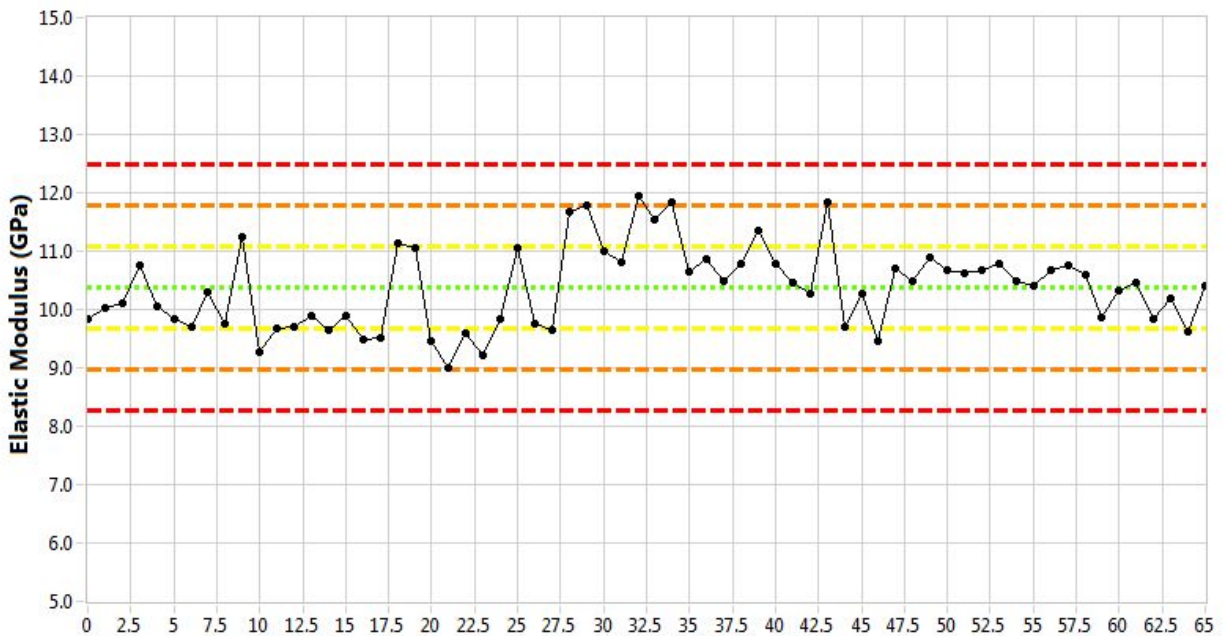


Figure 13. Elastic modulus by sonic resonance method (GPa), mean = 10.4, standard deviation = 0.7.

Title: Baseline Characterization Database Verification Report – PCEA Billet 02S8-7

ECAR No.: 3725

Rev. No.: 0

Project No.: 32138

Date: 07/18/2017

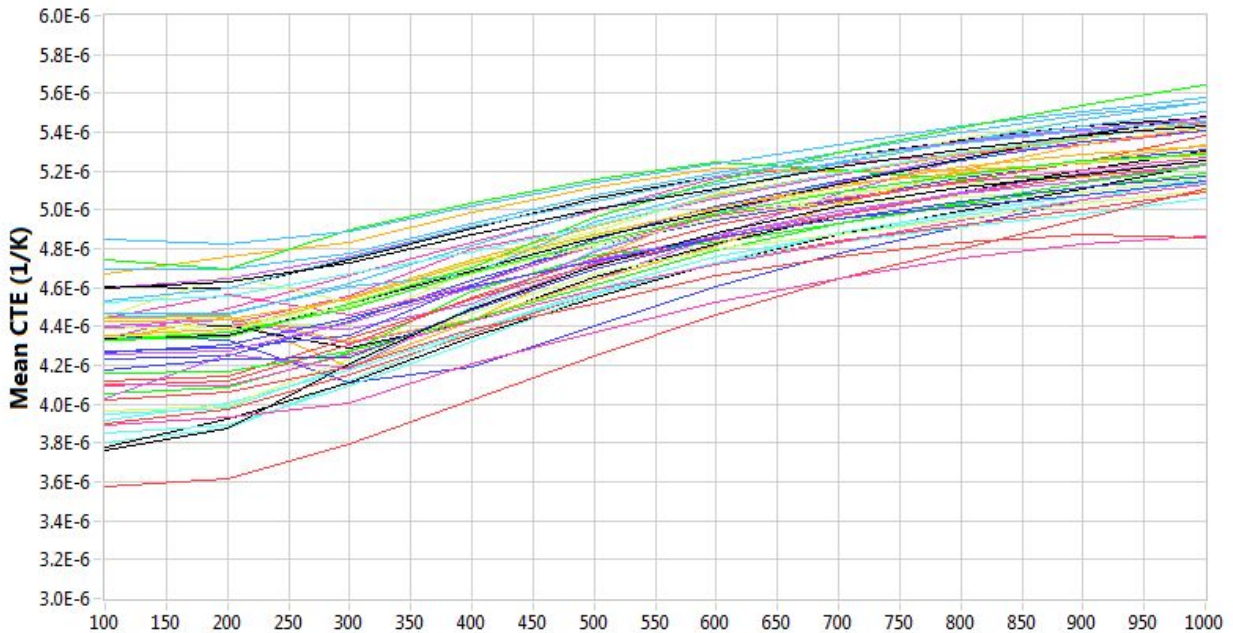


Figure 14. Mean coefficient of thermal expansion (1/K).

Density Values

The relatively simple geometric shape of the compressive specimens provides an opportunity to collect density data (per ASTM C559-90, "Standard Test Method for Bulk Density by Physical Measurements of Manufactured Carbon and Graphite Articles,"¹³) for a large portion of the specimens extracted from each billet. While not a true performance property, density measurements are relatively straightforward to collect and are often reflective of bulk mechanical properties. The density values recorded for the compression specimens (Figure 15) show no anomalous values outside of the expected material and measurement variation.

Title: Baseline Characterization Database Verification Report – PCEA Billet 02S8-7

ECAR No.: 3725

Rev. No.: 0

Project No.: 32138

Date: 07/18/2017

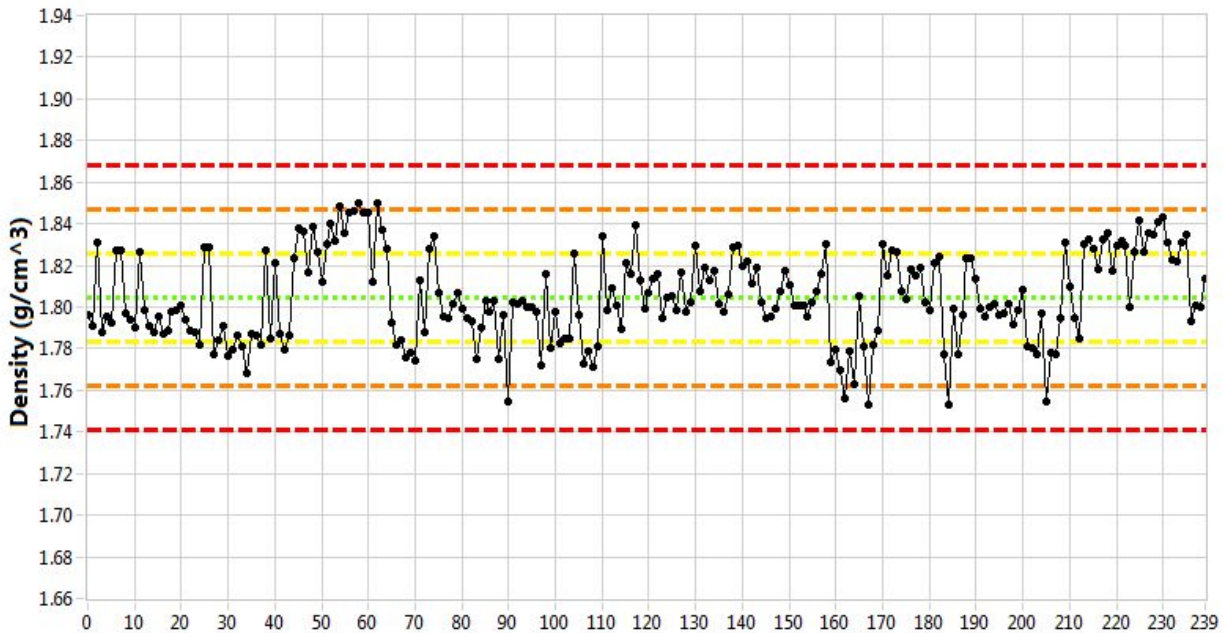


Figure 15. Density (g/cm^3), mean = 1.8047, standard deviation = 0.0211.

Flexural Specimen Database (PCEA 02S8-7F)

Flexural Testing

Flexural testing was performed per ASTM C651-91, “Standard Test Method for Flexural Strength of Manufactured Carbon and Graphite Articles Using Four-Point Loading at Room Temperature,”¹⁴ with clarifications to ambiguities in the standard identified in PLN-3467.³ Similar to the presentation of the compression specimen results, test validation lies not only in the documented adherence to applicable test plans and standards, but also in the noted correlations between recorded test properties and analyses for extreme or anomalous values. Additional verification of test conditions can be accomplished through an analysis of the physical characteristics of the specimens. Figure 16 shows the measured thicknesses for all flexural specimens tested. This plot shows a step change between specimens 35 and 36. Regardless of this fact, all of the 196 specimens measured dimensionally met the size requirements imposed by the ASTM standard. Figure 17 and Figure 18 show the measured width and length of the flexural specimens. Each of these plots show data that fell outside of the three standard deviation ranges. However, their corresponding flexure test results, such as maximum load, maximum stress and deflection, all fell within a reasonable interval. Because of this, the flexure data were deemed to be acceptable, and are included in the data set.

Title: Baseline Characterization Database Verification Report – PCEA Billet 02S8-7

ECAR No.: 3725 Rev. No.: 0 Project No.: 32138 Date: 07/18/2017

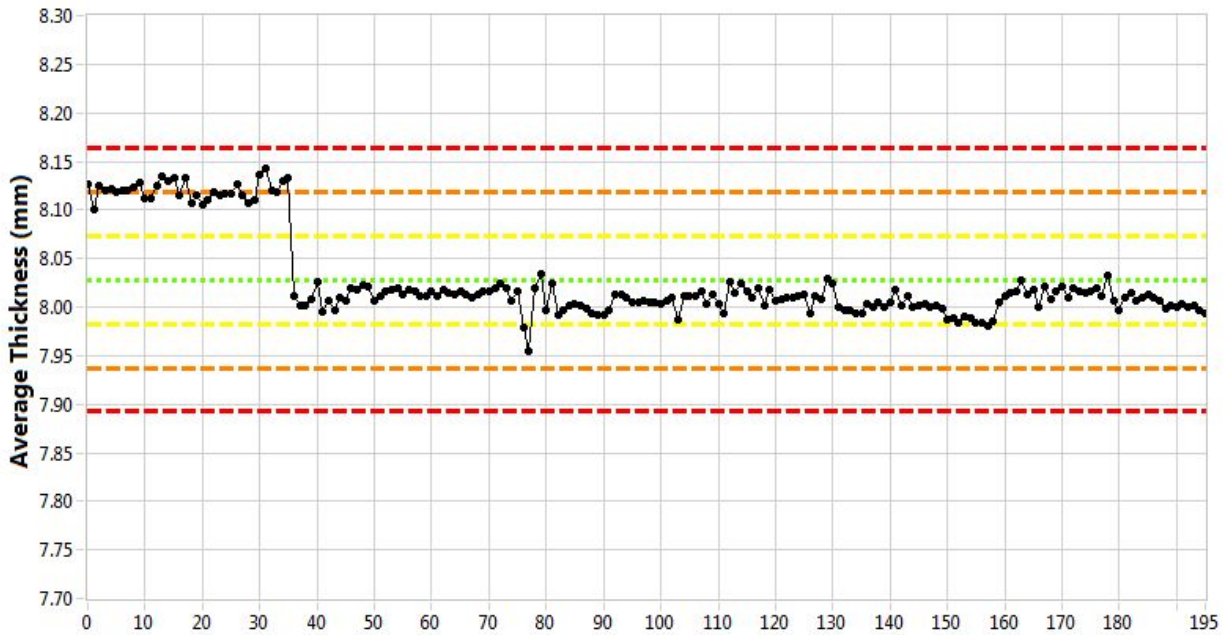


Figure 16. Average thickness (mm), mean = 8.0281, standard deviation = 0.0453.



Figure 17. Average width (mm), mean = 15.8883, standard deviation = 0.0085.

Title: Baseline Characterization Database Verification Report – PCEA Billet 02S8-7

ECAR No.: 3725 Rev. No.: 0 Project No.: 32138 Date: 07/18/2017



Figure 18. Average length (mm), mean = 79.4117, standard deviation = 0.0312.

Figure 19 and Figure 20 also show the relationship between flexural load and recorded flexural stress for the 192 specimens tested in flexure from PCEA 02S8-7. Further comparisons and verification can be made with measured deflection (Figure 21), which will reflect an additional correlation with stress values through material elastic constants.

Title: Baseline Characterization Database Verification Report – PCEA Billet 02S8-7

ECAR No.: 3725

Rev. No.: 0

Project No.: 32138

Date: 07/18/2017

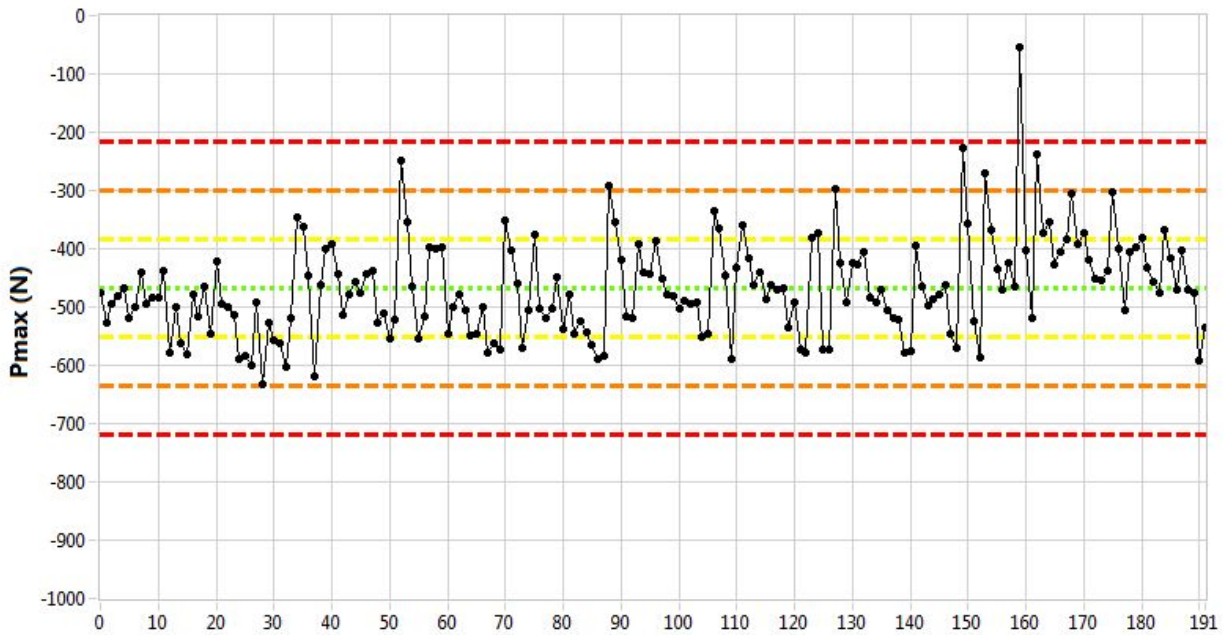


Figure 19. Maximum load (N), mean = -468.1, standard deviation = 83.6.

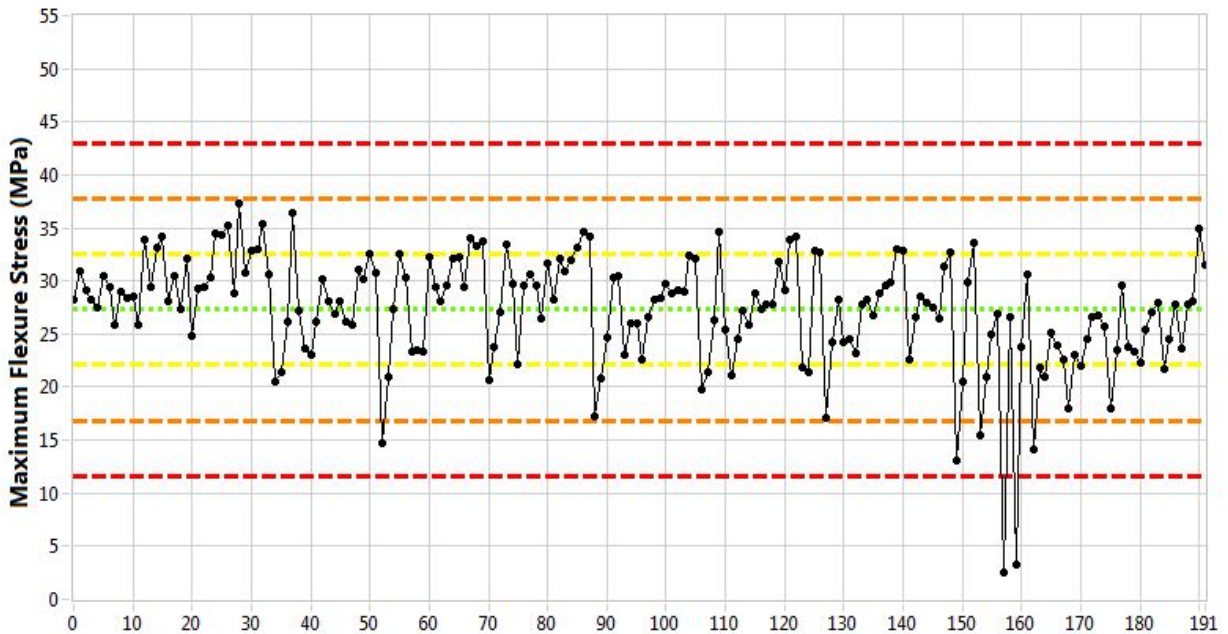


Figure 20. Maximum flexure stress (MPa), mean = 27.3, standard deviation = 5.2.

Title: Baseline Characterization Database Verification Report – PCEA Billet 02S8-7

ECAR No.: 3725

Rev. No.: 0

Project No.: 32138

Date: 07/18/2017

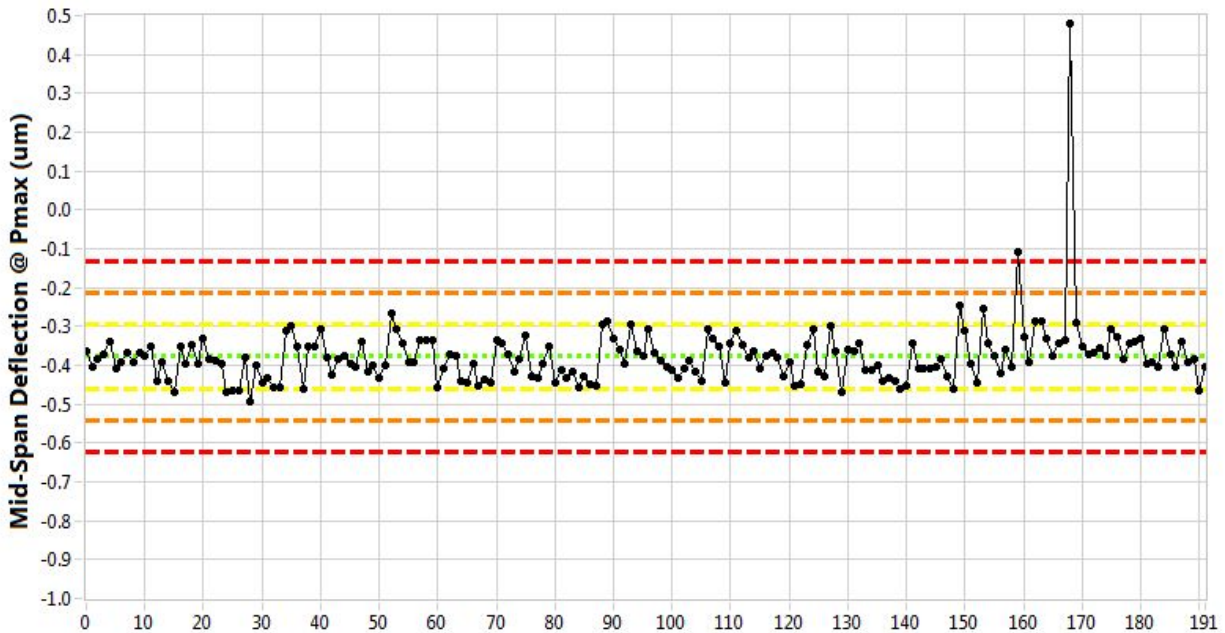


Figure 21. Mid-span deflection at maximum load (um), mean = -0.3774, standard deviation = 0.0817.

Density Values

Similar to the compression specimens, the flexural specimens' geometry facilitated an opportunity to make density measurements. Figure 22 shows density from the flexural specimens. All flexural specimens' data and associated deviations compare well with the compression specimens' density data.

Title: Baseline Characterization Database Verification Report – PCEA Billet 02S8-7

ECAR No.: 3725

Rev. No.: 0

Project No.: 32138

Date: 07/18/2017

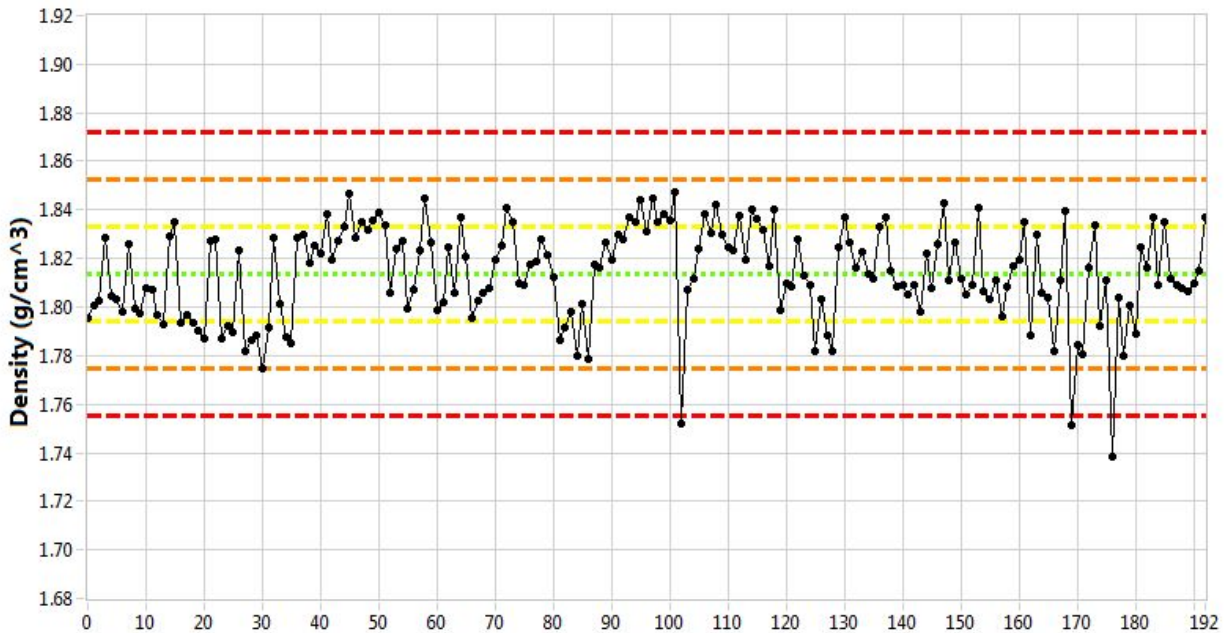


Figure 22. Density (g/cm³), mean = 1.8136, standard deviation = 0.0194.

Fundamental Frequency

The precise parallelepiped geometry of flexural specimens renders them particularly valuable for accurate measurements of fundamental frequency to collect elastic constants for both dynamic Young's modulus and shear modulus (ASTM C747-93⁹). Values for fundamental frequency-based moduli, both in flexural and torsional modes, (shown in Figure 23 and Figure 24) are calculated from the equations provided in ASTM C1259-08.¹⁰ All of the data from the torsional test fell within ± 3 standard deviations from their respective means, however, the flexural mode test yielded one gross outlier (specimen 131). Further examination of this specimen revealed that the 10 frequency values that make up the average were extremely inconsistent. The standard deviation of these frequencies is about 6000 Hz, whereas the average standard deviation of frequencies for the other 192 specimens is about 0.5 Hz. Due to the high standard deviation of the measured frequencies, the modulus data for this specimen will not be included in the final data set.

Title: Baseline Characterization Database Verification Report – PCEA Billet 02S8-7

ECAR No.: 3725

Rev. No.: 0

Project No.: 32138

Date: 07/18/2017

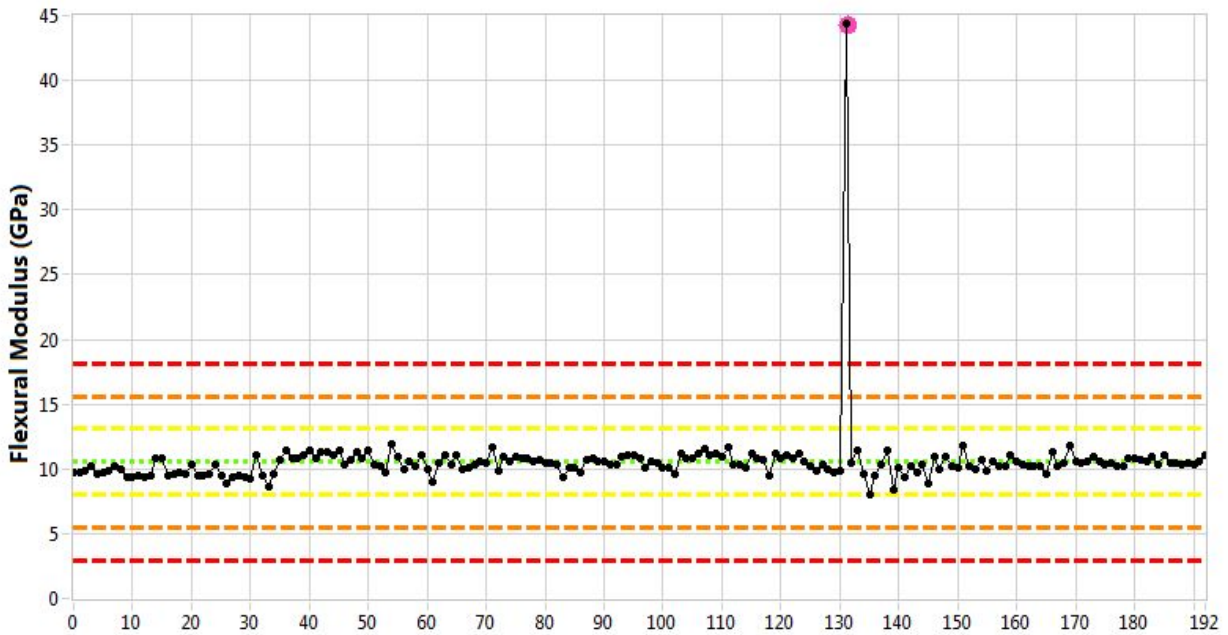


Figure 23. Flexural vibration mode modulus (GPa), mean = 10.6, standard deviation = 2.5. The highlighted point outside of the three standard deviation limit is excluded from the data set.

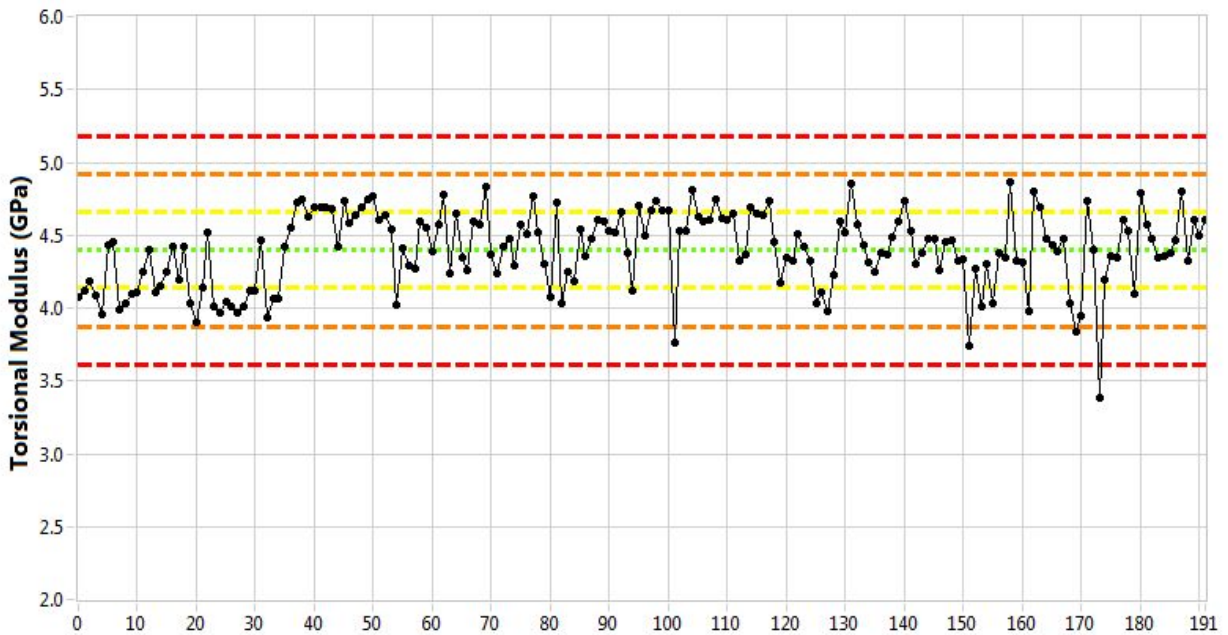


Figure 24. Torsional vibration mode modulus (GPa), mean = 4.4, standard deviation = 0.3.

Title: Baseline Characterization Database Verification Report – PCEA Billet 02S8-7

ECAR No.: 3725 Rev. No.: 0 Project No.: 32138 Date: 07/18/2017

Tensile Specimen Database (PCEA 02S8-7T)

Tensile Testing

Tensile testing was performed per ASTM C749-08, "Standard Test Method for Tensile Stress-Strain of Carbon and Graphite." Data verification follows the principles discussed in previous sections. As with other specimen types, data verification lies not only in documented adherence to applicable test plans and standards, but in noted correlations between recorded test properties and analyses for outlying values. Additional verification of test conditions can be carried out through an analysis of ancillary physical characteristics. The custom measurement software used to capture tensile gauge diameters is programmed to flag any measurement that deviates from the ASTM standard. Although Figure 25 shows the gauge diameter of two specimens fell outside of ± 3 standard deviations, both of these specimens were within the tolerance defined by the ASTM standard.

Figure 26 and Figure 27 show the relationship between tensile load and recorded tensile stress for the 192 specimens tested in uniaxial tension from PCEA 02S8-7. Further comparisons and verification can be made with extensometer-based measured deflection (shown in Figure 28), which will reflect an additional correlation with stress values through material elastic constants. In seven cases, the load at failure was considerably lower than the other 185 specimens (less than 500 N). In these cases, the calculated stress is therefore lower (less than 7 MPa when the mean of the group is 16 MPa), Figure 29. These seven cases have been evaluated for human error, misalignment, and other obvious causes and none were found. PCEA graphite is known to contain cracks and porosity of significant size. These flaws in the graphite can be on the order of the tensile specimen gauge section diameter. This is what is assumed in these cases. However, this alone is not a reason for rejection of these particular data. The analyst should be aware that this type of flaw exists and the impact it has on loaded geometries with similar cross sections to the tested tensile specimens. Therefore, all of the data were kept and included in the final data set.

Title: Baseline Characterization Database Verification Report – PCEA Billet 02S8-7

ECAR No.: 3725

Rev. No.: 0

Project No.: 32138

Date: 07/18/2017

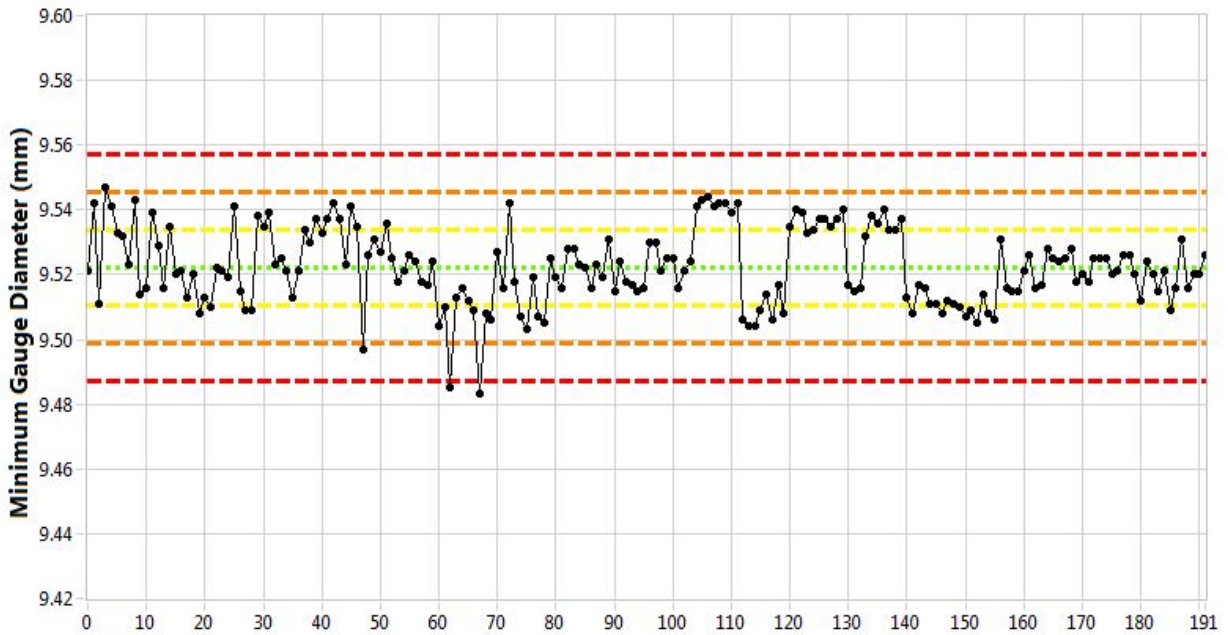


Figure 25. Minimum gauge diameter (mm), mean = 9.5222, standard deviation = 0.0117.

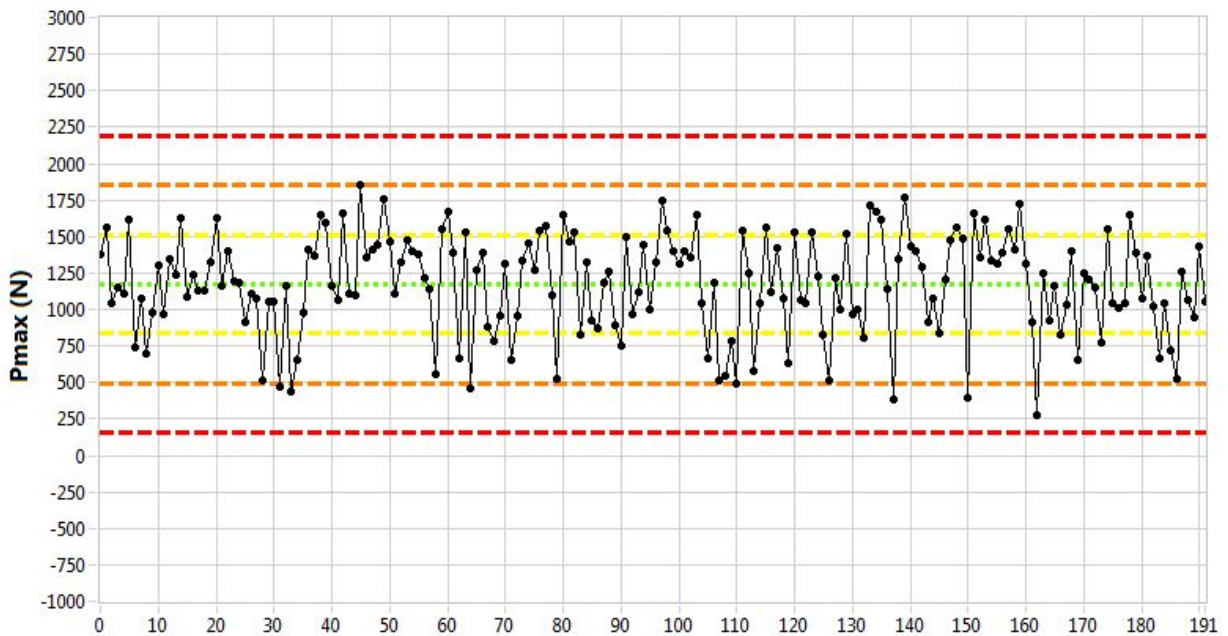


Figure 26. Maximum load (N), mean = 1172.9, standard deviation = 338.8.

Title: Baseline Characterization Database Verification Report – PCEA Billet 02S8-7

ECAR No.: 3725

Rev. No.: 0

Project No.: 32138

Date: 07/18/2017

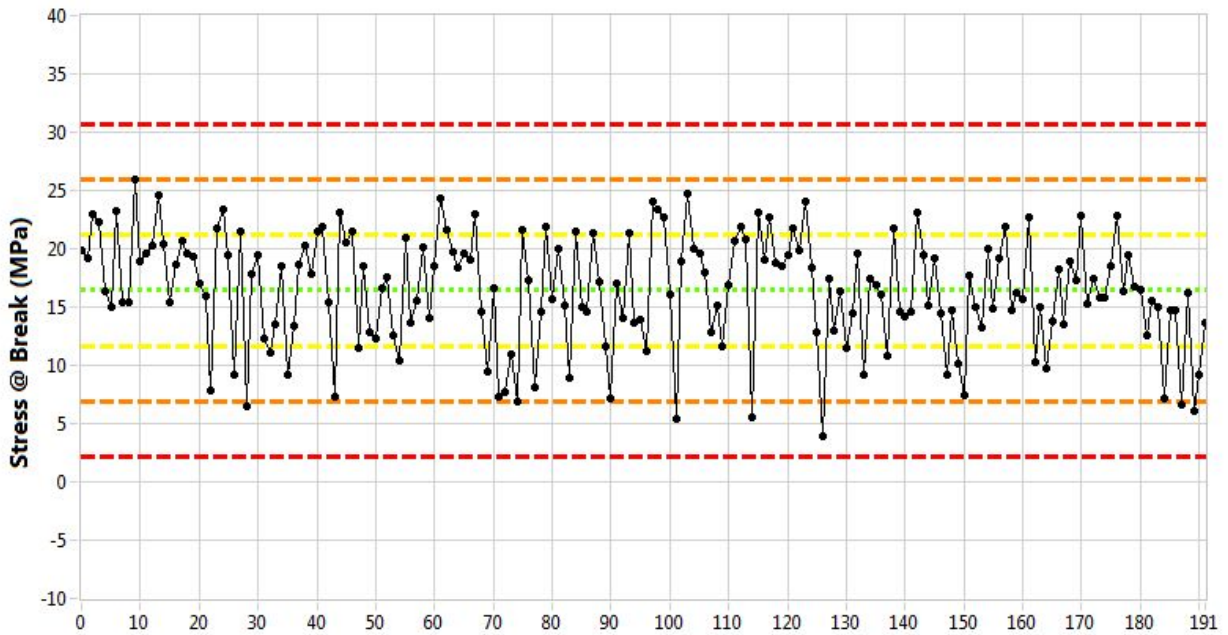


Figure 27. Stress at break (MPa), mean = 16.4, standard deviation = 4.7.

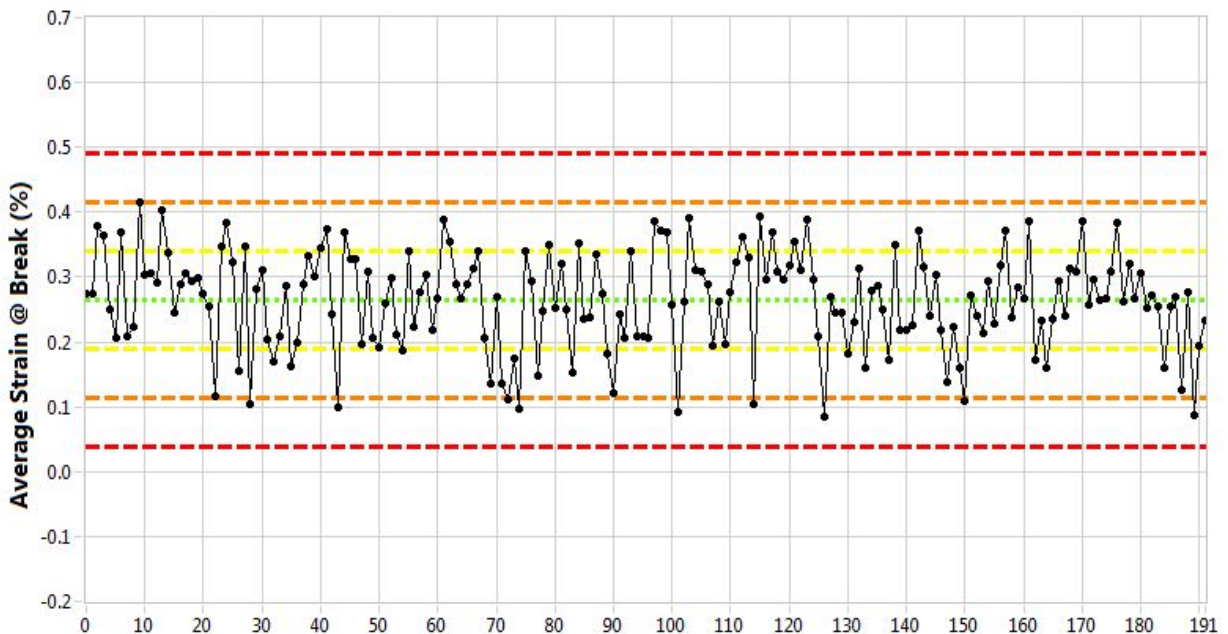


Figure 28. Average strain at break (%), mean = 0.26, standard deviation = 0.08.

Title: Baseline Characterization Database Verification Report – PCEA Billet 02S8-7

ECAR No.: 3725

Rev. No.: 0

Project No.: 32138

Date: 07/18/2017

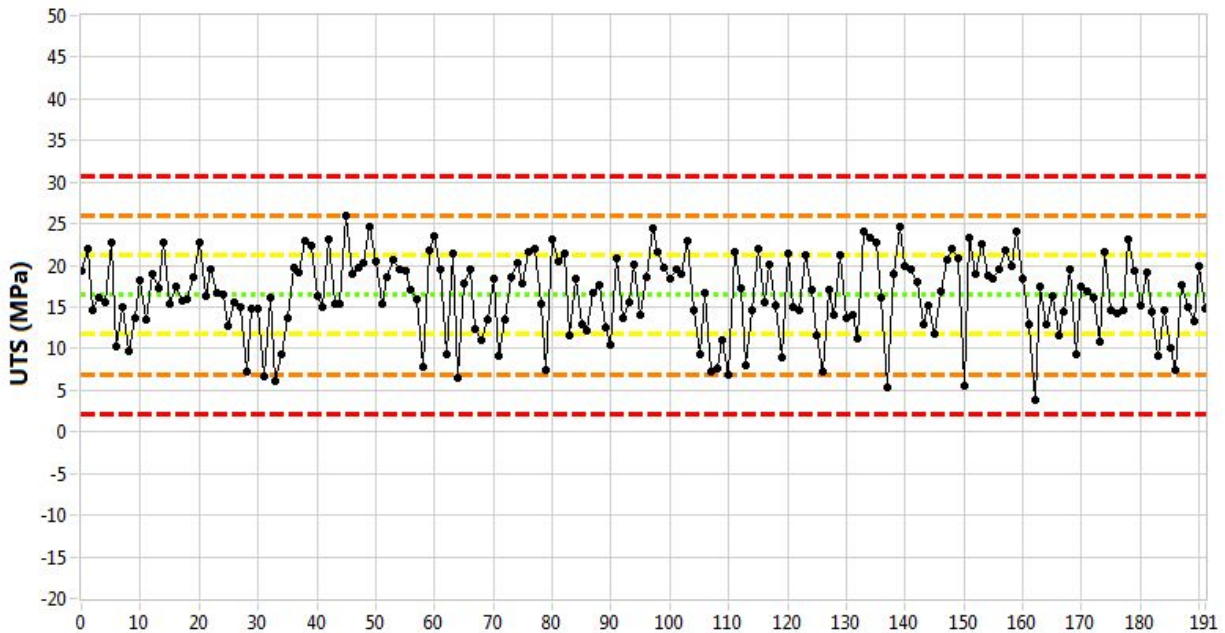


Figure 29. Ultimate tensile strength (MPa), mean = 16.4, standard deviation = 4.7.

RE-MACHINED SPECIMEN PROPERTIES

Two of the key components to direct comparisons between baseline and AGC data are (1) the analyses of specimens with similar geometries and (2) employment of similar test techniques for comprehensive validation. The geometry of the tensile specimens provides the opportunity to “re-machine” the unstressed sections of the specimen ends (shown in Figure 30) to the same dimensions as AGC piggyback specimens. A random cross section of tensile specimens was re-machined in order to repeat tests on AGC-sized specimens (i.e., diffusivity and split disc testing). Using actual test specimens for re-machining enables continued employment of the specimen identification and tracking code system, because specimens are machined from tracked locations and can reuse the identification code.

Title: Baseline Characterization Database Verification Report – PCEA Billet 02S8-7

ECAR No.: 3725

Rev. No.: 0

Project No.: 32138

Date: 07/18/2017

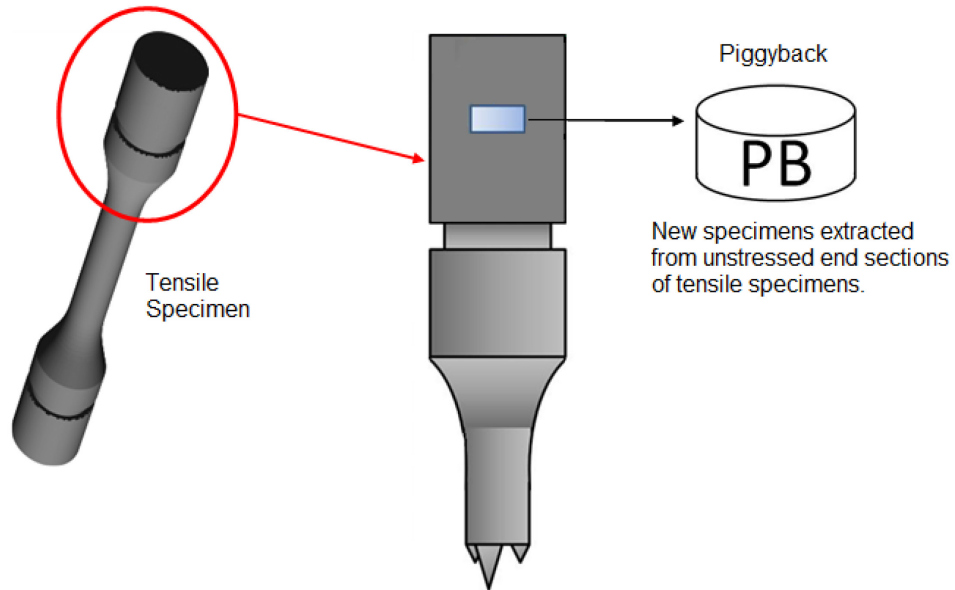


Figure 30. Unstressed specimen remnants from tensile specimens are re-machined into AGC-sized piggyback specimens.

RE-MACHINED SPLIT DISC TESTING

Split disc tensile strength testing was performed in accordance with PLN-3348, Revision 4 Section 6.1.1.5. This allows for a direct comparison of tensile data to data that were acquired through strict application of ASTM C749-08. Figure 31 and Figure 32 show strength and load data from the split disc testing of 37 re-machined specimens. The mean strength value calculated from the split disc testing compared closely with that from traditional tensile testing (Figure 27) and even had a lower standard deviation.

Title: Baseline Characterization Database Verification Report – PCEA Billet 02S8-7

ECAR No.: 3725

Rev. No.: 0

Project No.: 32138

Date: 07/18/2017

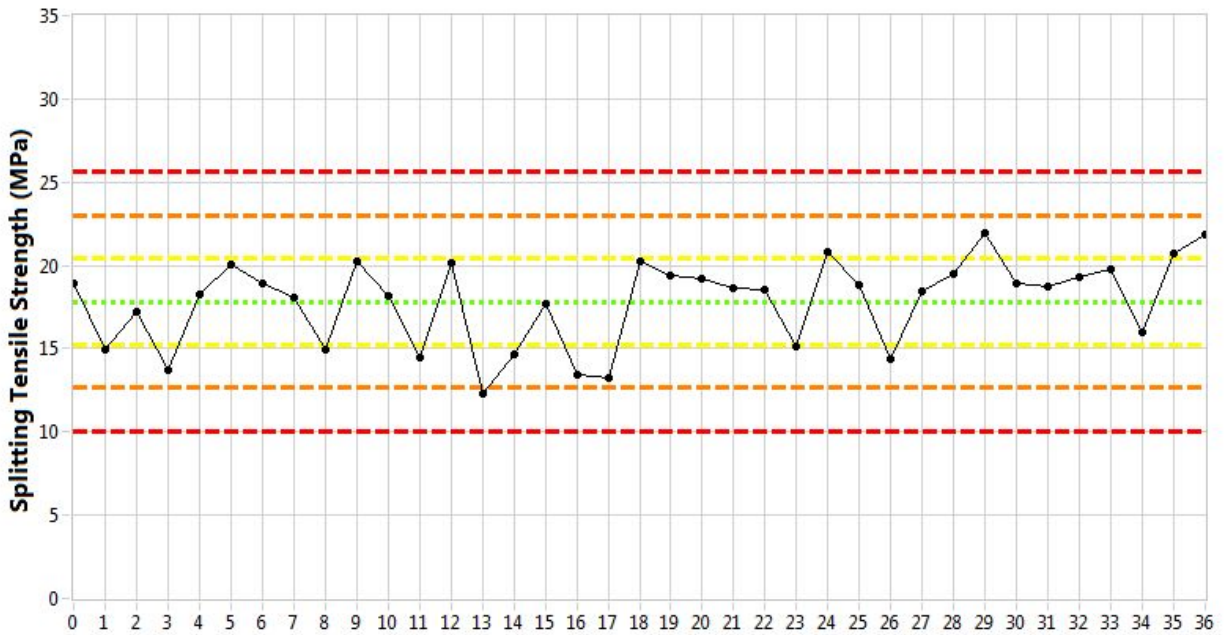


Figure 31. Split disc test tensile strength (MPa), mean = 17.83, standard deviation = 2.59.

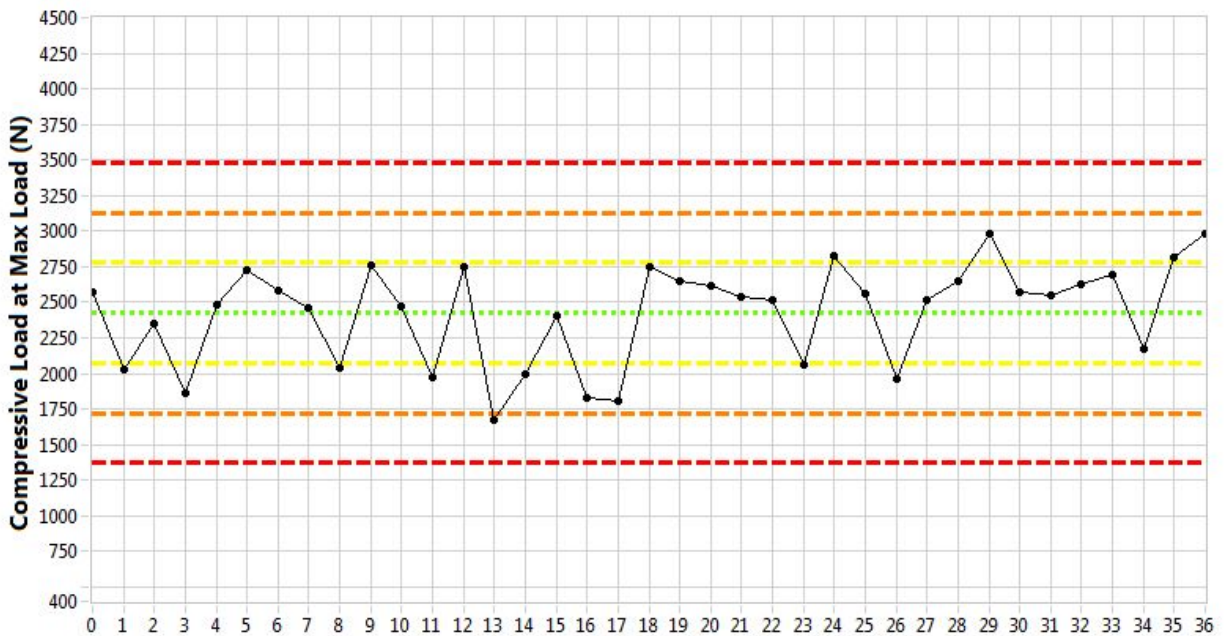


Figure 32. Split disc test compressive load at maximum load (N), mean = 2355.8, standard deviation = 159.9.

Title: Baseline Characterization Database Verification Report – PCEA Billet 02S8-7

ECAR No.: 3725

Rev. No.: 0

Project No.: 32138

Date: 07/18/2017

RE-MACHINED SPECIMEN DIFFUSIVITY

Thermal diffusivity values are collected from the re-machined tensile specimens per ASTM E1461-07, "Standard Test Method for Thermal Diffusivity by the Flash Method."¹⁵ Diffusion of heat through the specimen following application of thermal energy via a laser source demonstrates heat transfer characteristics and can be used to calculate thermal conductivity for design purposes. The resulting group of diffusivity values, revealing a tight grouping of thermal transfer characteristics, is shown in Figure 33.

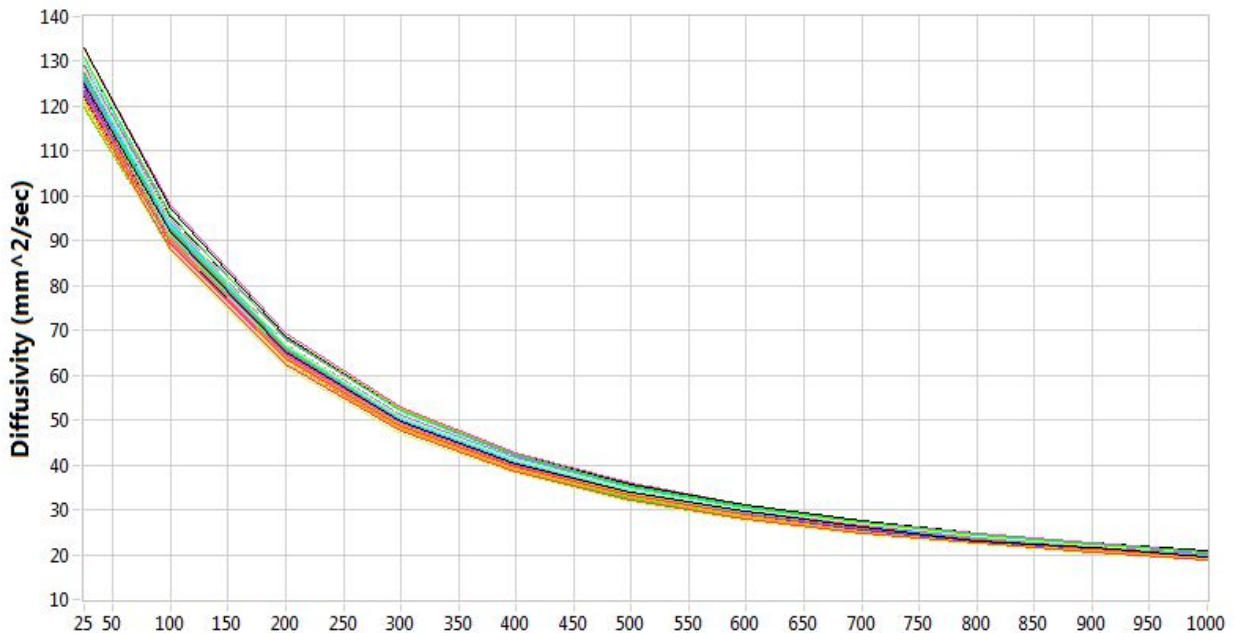


Figure 33. Re-machined specimen diffusivity (mm²/sec).

SUMMARY

Comprehensive data sets for the PCEA billet 02S8-7 have been compiled into summary files of property scalar values. The data spreadsheet files are divided by mechanical test specimen type into three main sets: (1) compressive, (2) flexural, and (3) tensile. The multitude of tests and evaluations performed on each specimen type are individually tabbed in the main data set files.

In addition to a full visual review of the data files to determine if obvious errors were made with the data collected (e.g., missing information or otherwise blank cells), graphical representations were made of individual evaluations in order to provide a means to spot anomalies. A review of the data indicates that the files, as submitted, are fully representative of the measured properties of the graphite billets being tested, as outlined in the applicable test procedures and program plans.

Title: Baseline Characterization Database Verification Report – PCEA Billet 02S8-7

ECAR No.: 3725 Rev. No.: 0 Project No.: 32138 Date: 07/18/2017

REFERENCES

1. PLN-2497, 2010, "Graphite Technology Development Plan," Rev. 1, October 2010.
2. PLN-3348, 2011, "Graphite Mechanical Testing," Rev. 4, March 2017.
3. PLN-3467, 2011, "Baseline Graphite Characterization Plan: Electromechanical Testing," Rev. 1, June 2015.
4. PLN-3267, 2010, "AGC-2 Characterization Plan," Rev. 0, March 2010.
5. Carroll, Mark, Joe Lord, and David Rohrbaugh, 2010, *Baseline Graphite Characterization: First Billet*, INL/EXT-10-19910, September 2010.
6. LWP-20000-01, 2015, "Conduct of Research Plan," Rev. 0, December 2015.
7. ASTM Standard C695-15, 2015, "Standard Test Method for Compressive Strength of Carbon and Graphite," ASTM International.
8. ASTM Standard C769-09, 2009, "Standard Test Method for Sonic Velocity in Manufactured Carbon and Graphite Material for Use in Obtaining an Approximate Young's Modulus," ASTM International.
9. ASTM Standard C747-93 (Reapproved 2005), "Standard Test Method for Moduli of Elasticity and Fundamental Frequencies of Carbon and Graphite Materials by Sonic Resonance," ASTM International.
10. ASTM Standard C1259-08, 2008, "Standard Test Method for Dynamic Young's Modulus, Shear Modulus, and Poisson's Ratio for Advanced Ceramics by Impulse Excitation of Vibration," ASTM International.
11. ASTM Standard C611-05, 2005, "Standard Test Method for Electrical Resistivity of Manufactured Carbon and Graphite Articles at Room Temperature," ASTM International.
12. ASTM Standard E228-06, 2006, "Standard Test Method for Linear Thermal Expansion of Solid Materials with a Push Rod Dilatometer," ASTM International.
13. ASTM Standard C559-90, reapproved 2005, "Standard Test Method for Bulk Density by Physical Measurements of Manufactured Carbon and Graphite Articles," ASTM International.
14. ASTM Standard C651-91, reapproved 2005, "Standard Test Method for Flexural Strength of Manufactured Carbon and Graphite Articles Using Four-Point Loading at Room Temperature," ASTM International, 2005.
15. ASTM Standard C749-08, 2008, "Standard Test Method for Tensile Stress-Strain of Carbon and Graphite," ASTM International.
16. ASTM Standard E1461-07, 2007, "Standard Test Method for Thermal Diffusivity by the Flash Method," ASTM International.

Title: Baseline Characterization Database Verification Report – PCEA Billet 02S8-7

ECAR No.: 3725

Rev. No.: 0

Project No.: 32138

Date: 07/18/2017

Appendix A

Additional Compression Specimen Database Plots (PCEA 02S8-7C)

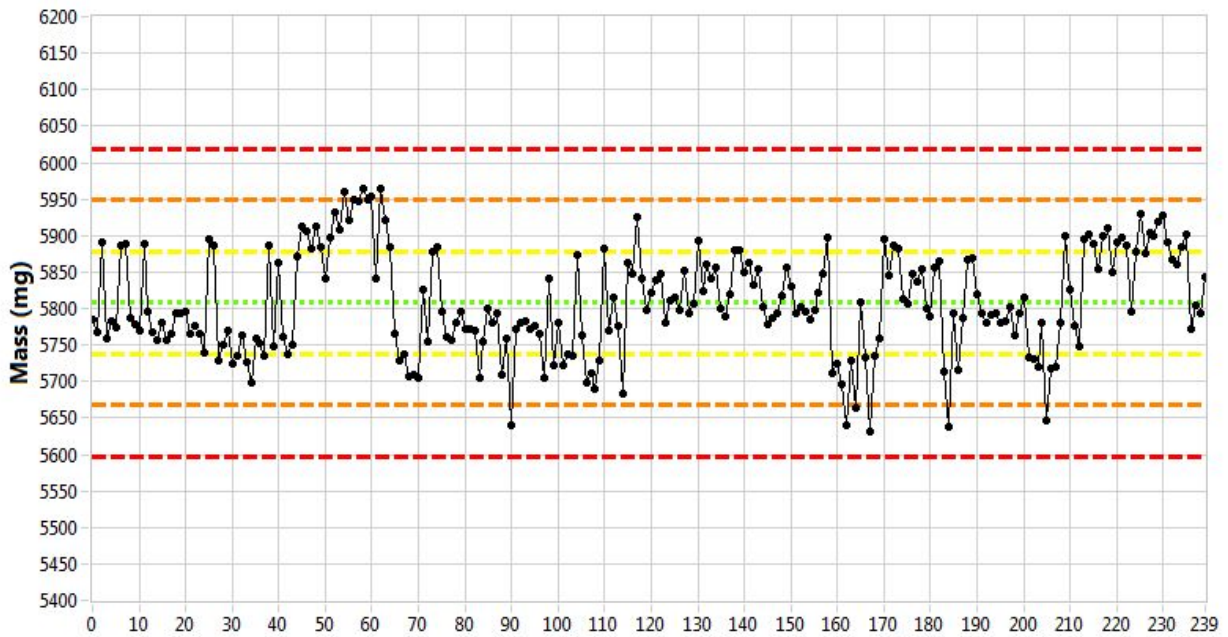


Figure A-1. Mass (mg), mean = 5807.9, standard deviation = 70.4.

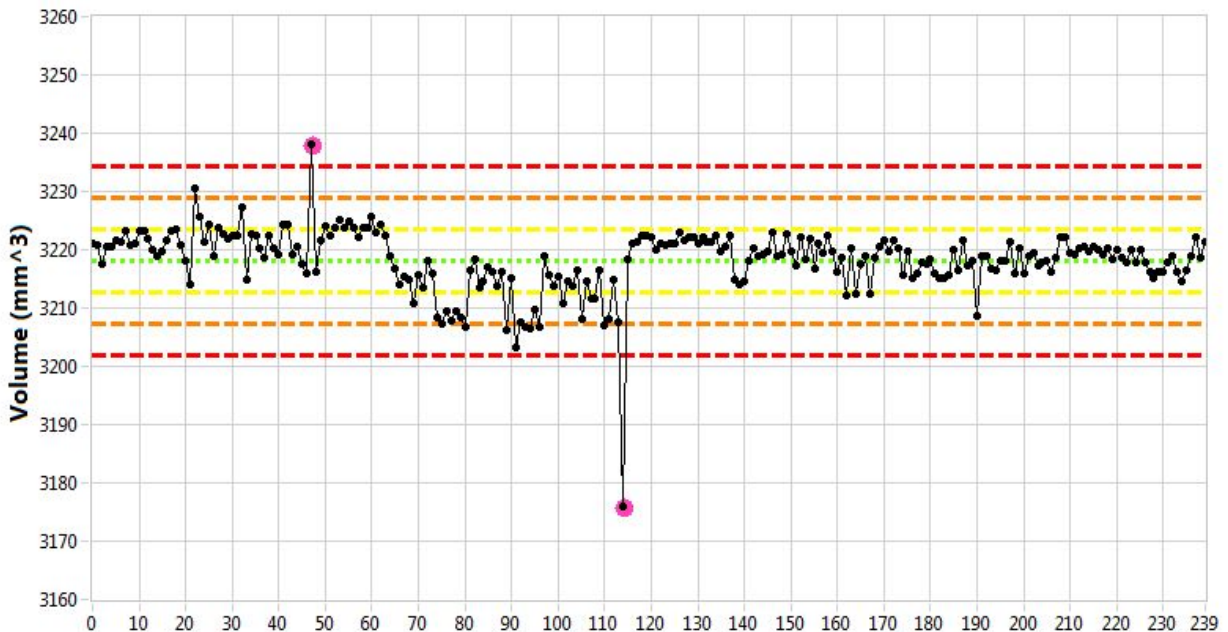


Figure A-2. Volume (mm³), mean = 3218, standard deviation = 5.4.

Title: Baseline Characterization Database Verification Report – PCEA Billet 02S8-7

ECAR No.: 3725

Rev. No.: 0

Project No.: 32138

Date: 07/18/2017

Appendix B

Additional Flexural Specimen Database Plots (PCEA 02S8-7F)

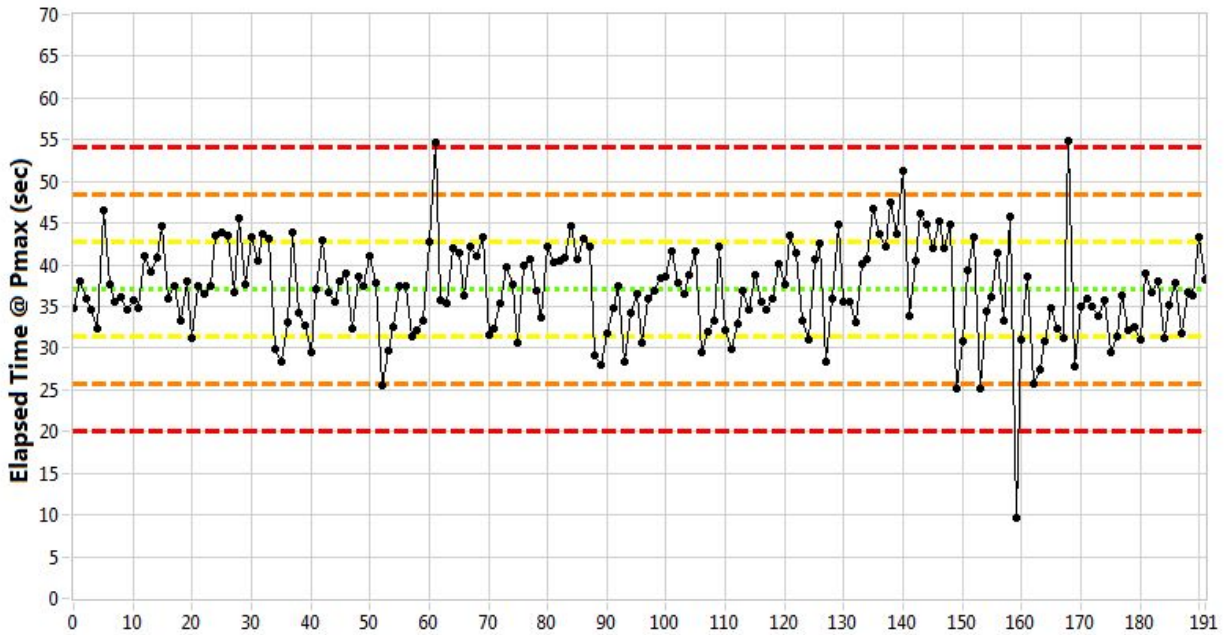


Figure B-1. Elapsed time at maximum load (sec), mean = 37.0, standard deviation = 5.7.

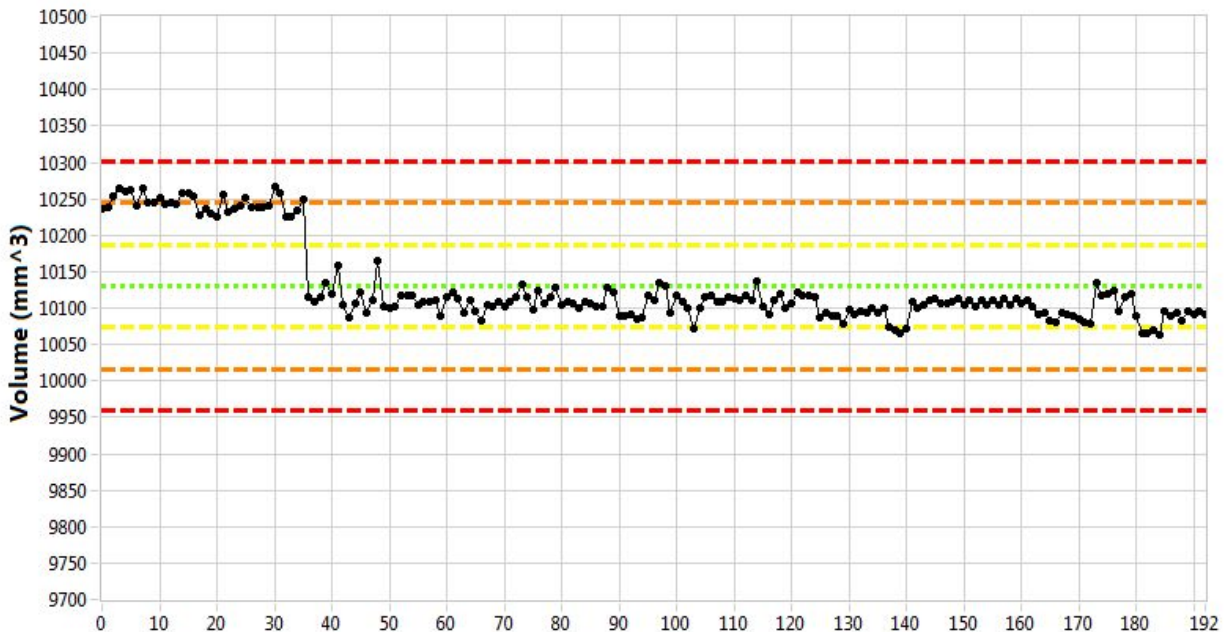


Figure B-2. Volume (mm³), mean = 10130.1, standard deviation = 57.1.

Title: Baseline Characterization Database Verification Report – PCEA Billet 02S8-7

ECAR No.: 3725

Rev. No.: 0

Project No.: 32138

Date: 07/18/2017

Appendix C

Additional Tensile Specimen Database Plots (PCEA 02S8-7T)

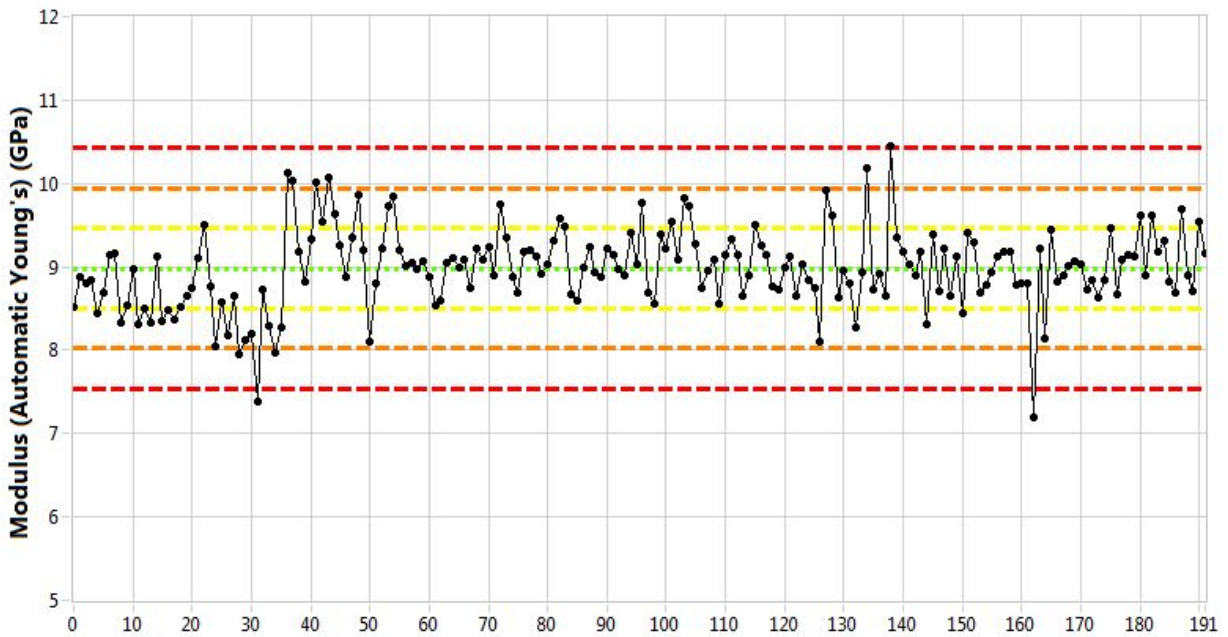


Figure C-1. Modulus (automatic Young's) (GPa), mean = 9.0, standard deviation = 0.5.

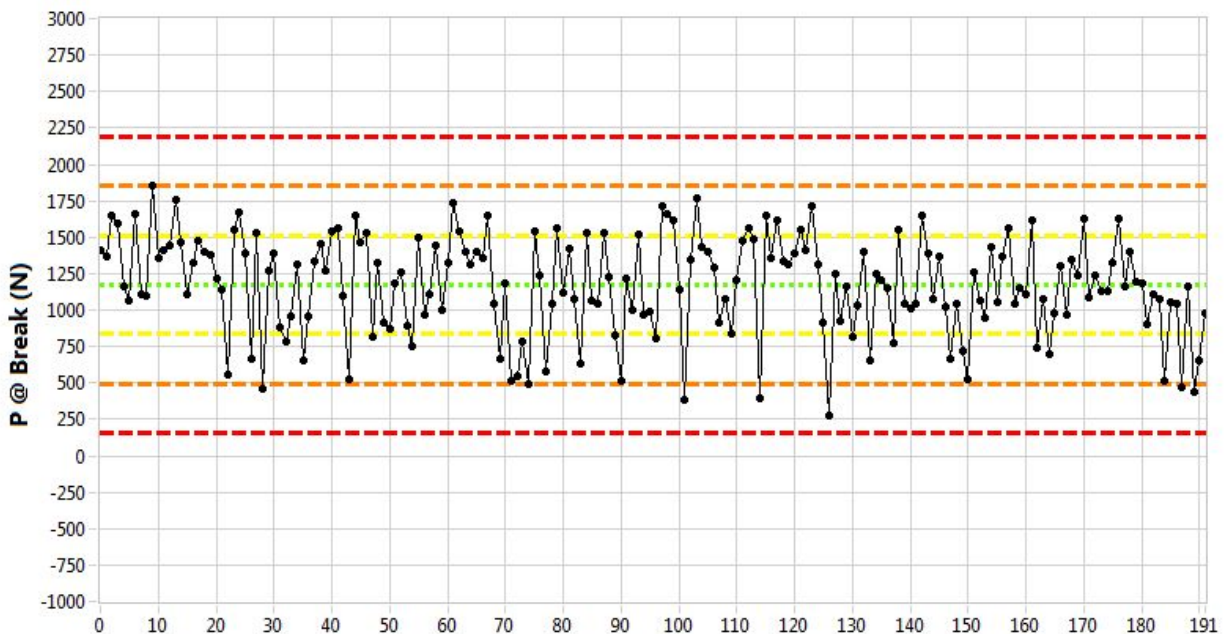


Figure C-2. Load at break (N), mean = 1171.9, standard deviation = 338.7.

Title: Baseline Characterization Database Verification Report – PCEA Billet 02S8-7

ECAR No.: 3725

Rev. No.: 0

Project No.: 32138

Date: 07/18/2017

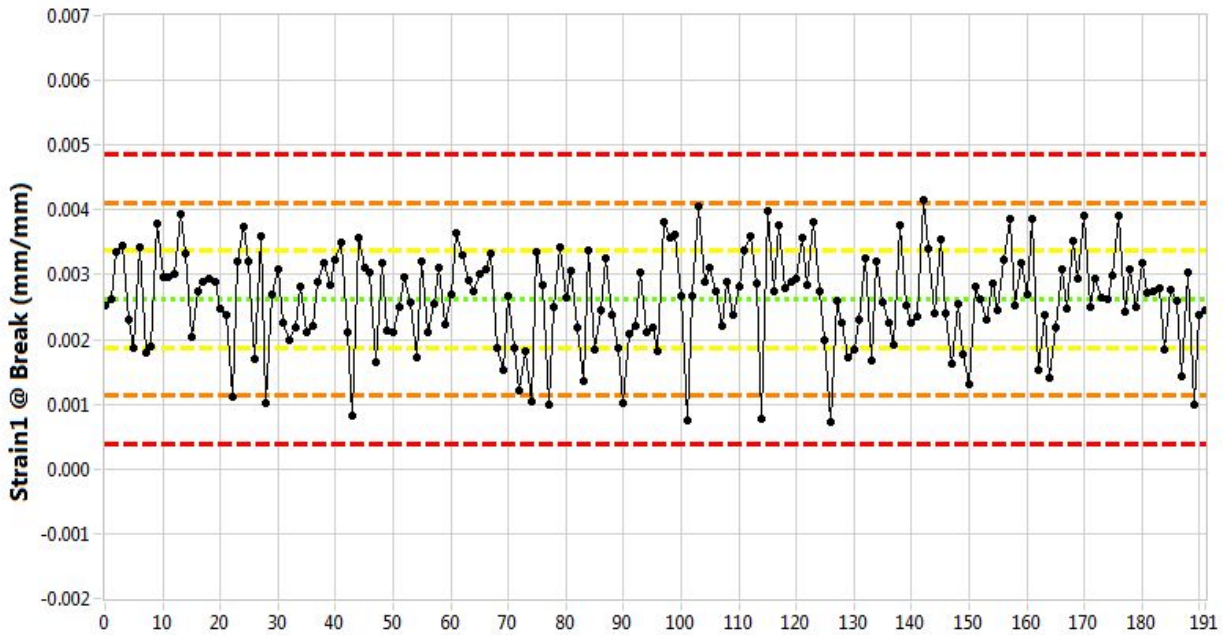


Figure C-3. Strain 1 at break (mm/mm), mean = 0.0026, standard deviation = 0.0007.

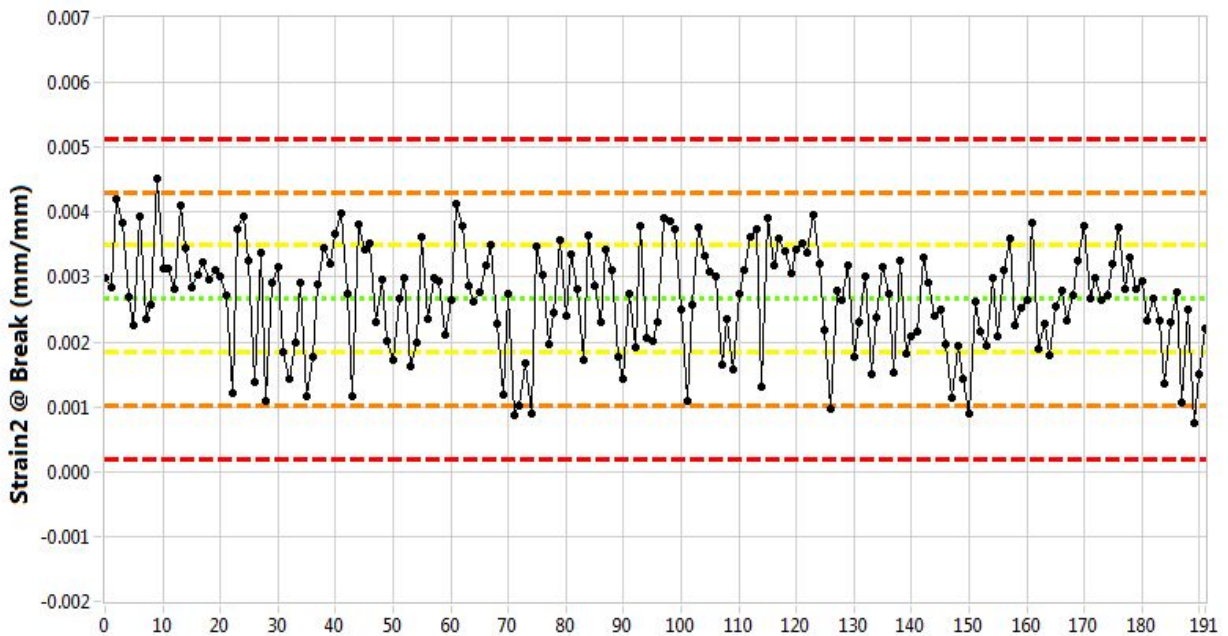


Figure C-4. Strain 2 at break (mm/mm), mean = 0.0027, standard deviation = 0.0008.

Title: Baseline Characterization Database Verification Report – PCEA Billet 02S8-7

ECAR No.: 3725

Rev. No.: 0

Project No.: 32138

Date: 07/18/2017

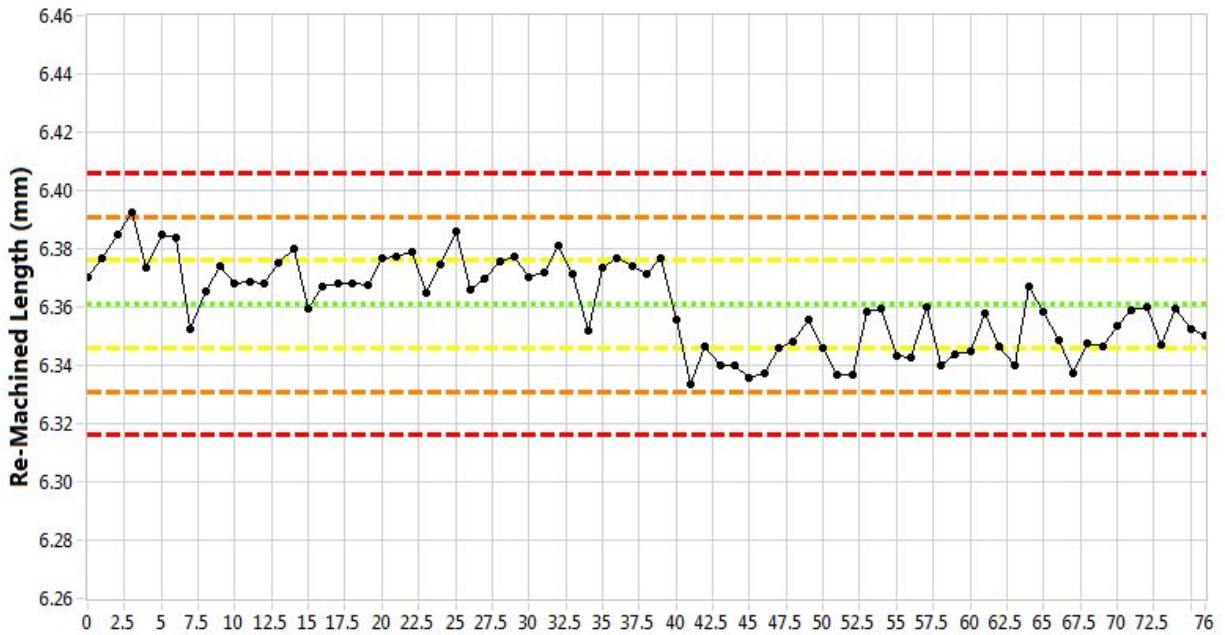


Figure C-5. Re-machined length (mm), mean = 6.3610, standard deviation = 0.0150.

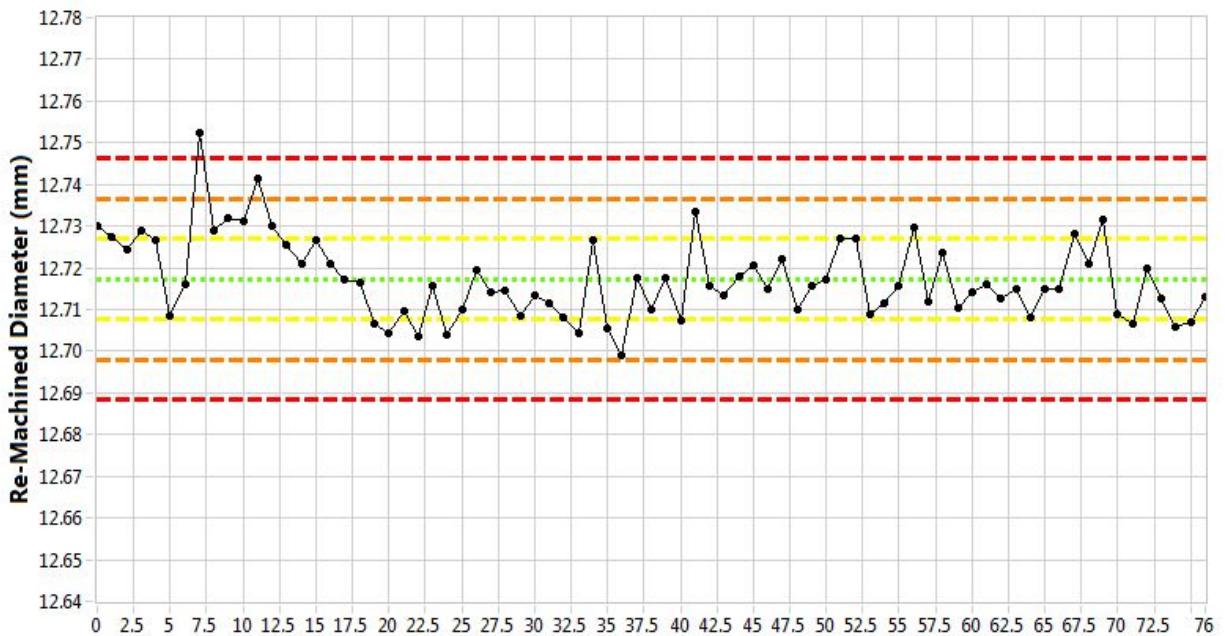


Figure C-6. Re-machined diameter (mm), mean = 12.7173, standard deviation = 0.0096.

Title: Baseline Characterization Database Verification Report – PCEA Billet 02S8-7

ECAR No.: 3725

Rev. No.: 0

Project No.: 32138

Date: 07/18/2017

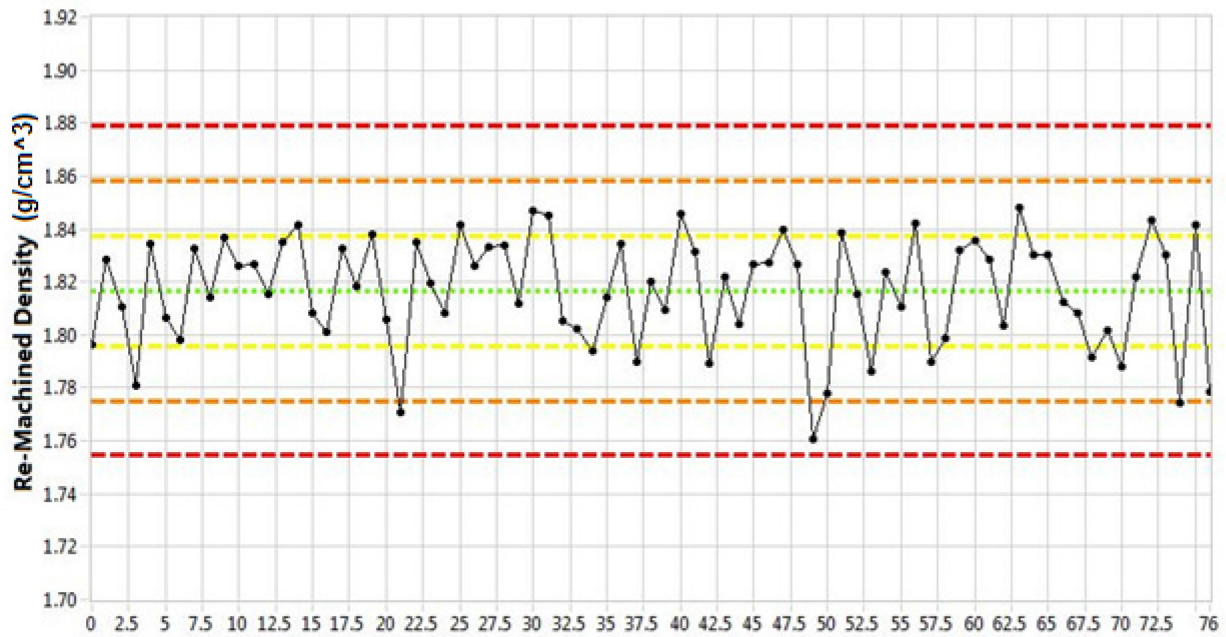


Figure C-7. Re-machined density (g/cm^3), mean = 1.8167, standard deviation = 0.0207.

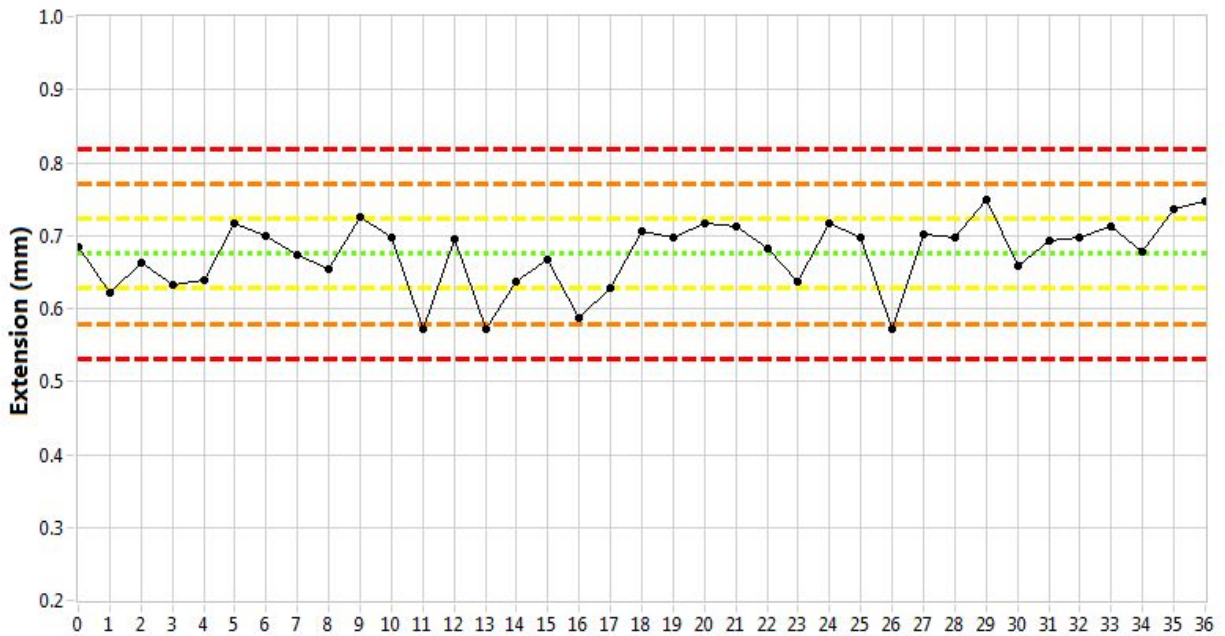


Figure C-8. Split disc test extension (mm), mean = 0.6749, standard deviation = 0.0479.

Title: Baseline Characterization Database Verification Report – PCEA Billet 02S8-7

ECAR No.: 3725

Rev. No.: 0

Project No.: 32138

Date: 07/18/2017

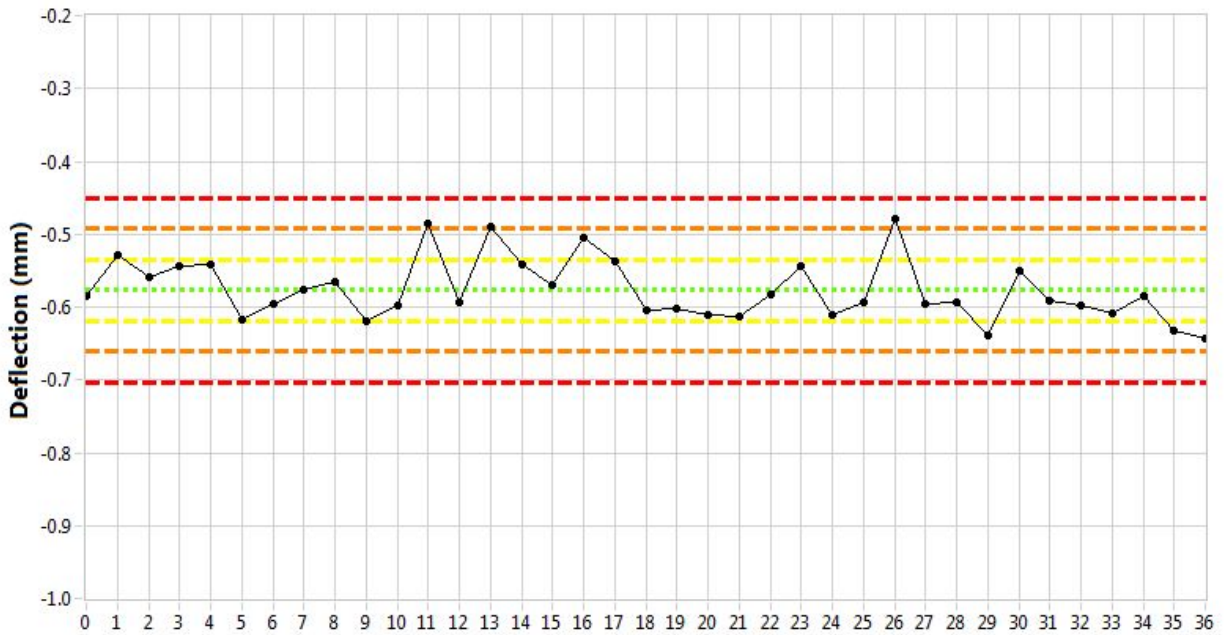


Figure C-9. Split disc test deflection (mm), mean = -0.5765, standard deviation = 0.0422.